



FULL-TIME PROSPECTUS 2024

INNOVATING
EDUCATION
SINCE 1843



OUR VALUES



CONTENTS

WHY CHOOSE NEW COLLEGE SWINDON?	02	ART, DESIGN AND PHOTOGRAPHY	50
QUEENS DRIVE CAMPUS	04	BUSINESS, ACCOUNTING AND FINANCE	54
NORTH STAR CAMPUS	05	CHILDCARE, EARLY YEARS AND TEACHING	58
LEVELS EXPLAINED	06	COMPUTING AND I.T.	62
CHOOSING YOUR COURSE	07	CONSTRUCTION TRADES	66
STUDY ROUTES	08	ELECTRICAL INSTALLATION	72
YOUR STUDY PROGRAMME	09	ENGINEERING	74
CAREERS EXTRA	10	HAIR AND BEAUTY	78
ENRICHMENT	12	HEALTH AND SOCIAL CARE	82
HIGH FLYERS PROGRAMME	14	HOSPITALITY AND CATERING	86
YOUR APPLICATION JOURNEY	15	MEDIA AND DIGITAL	90
SUPPORT FOR YOU	16	MEDIA MAKE-UP	94
ADDITIONAL LEARNING SUPPORT	18	MOTOR VEHICLE	96
FINANCIAL SUPPORT	19	PERFORMING ARTS	100
COLLEGE LIFE	20	PUBLIC SERVICES	104
A LEVELS AT NCS SIXTH	22	SPORT	106
GCSEs AT NCS SIXTH	32	TRAVEL AND TOURISM	110
APPRENTICESHIPS	36	PRE-16	112
VOCATIONAL COURSES	40	FOUNDATION LEARNING	114
ANIMAL MANAGEMENT	44	ESOL	116
APPLIED SCIENCE	48	NEXT STEPS	117

Disclaimer: Every effort has been made to ensure that all information is accurate at the time of going to print. The College accepts no responsibility for omissions or errors and reserves the right to make changes or cancellations to courses, their content and delivery locations. We cannot accept any liability arising out of any changes or cancellations.

WELCOME TO NEW COLLEGE SWINDON

I am delighted that you are considering New College Swindon for the next step in your journey.

If you choose to join us in September, then you will become part of a vibrant, dynamic and inclusive community that will nurture your aspirations, challenge your limits, and help unlock your true potential.

For over 180 years, we have been innovating education across Swindon and Wiltshire, from the first apprenticeships offered to railway workers in 1843, to the opening of the Swindon and Wiltshire Institute of Technology in 2021 and the SWITCH immersive reality suite in 2022.

Here you will be able to choose from over 180 courses, across A Levels, vocational qualifications, T-Levels, Apprenticeships, GCSEs and more. Our lecturers bring a huge amount of knowledge, industry experience, and enthusiasm to your learning. Providing you with opportunities to take your studies beyond the classroom.

Through our Careers Extra initiative, you will have many chances to engage with employers throughout your study programme, developing the wider skills that employers require which will make you extremely competitive in your future career.

The ideal bridge between school and university or a career, New College Swindon will give you greater independence and responsibility, whilst still providing a safety net of excellent learning and wellbeing support.

Our students describe the College as a warm, friendly and safe environment that allows them to focus on achieving their personal and academic goals.

I hope you get the chance to come and visit us in person and I look forward to welcoming you into our college community.

LEAH PALMER

INTERIM PRINCIPAL AND CEO





Progression opportunities

Courses from Entry Level to Level 3+ and HE/degree-level



Apprenticeship training provider nationally^^



Experienced and highly qualified staff

Many with postgraduate qualifications or industry experience



Employability initiatives

Opportunities to engage with employers and develop skills to help you compete for jobs

500+
STUDENTS

Progress to university each year, including Oxbridge and Russell Group universities



Outstanding student support including excellent Additional Learning Support



Specialist and modern facilities



for Employer Satisfaction



A bridge between school and university or your first job

^^ rate my apprenticeship 2021-22

WHY CHOOSE NEW COLLEGE SWINDON?





QUEENS DRIVE CAMPUS

LOCATION: NEW COLLEGE DRIVE | SWINDON | SN3 1AH

- Art, design and textiles studios
- Canteen including Costa outlet
- Dance studios
- Learning Resource Centre
- Phoenix Theatre
- Photography studios and dark room
- Recording studio
- Science labs
- Sensory hub for Additional Learning Support
- Sports Centre with sports hall, 3G pitch and gym
- Student Enrichment Centre
- Training hospital wards with immersive AR/VR
- Training nursery
- Wellbeing Centre

20 minute walk from the town centre (5 minute drive).
8 minutes from M4 junction 15 and the A419.
Regular bus services direct to the campus.
Free parking.

HOME OF THE

SWINDON AND WILTSHIRE

I	N	S	T	I	T	U	T	E	O	F
T	E	C	H	N	O	L	O	G	Y	






NORTH STAR CAMPUS

LOCATION: NORTH STAR AVENUE | SWINDON | SN2 1DY

- Animal Management Centre
- Art, design and media make-up studios
- Automotive workshops
- Canteen with Costa Coffee and Starbucks outlets
- Construction Centre and workshops
- Creative media studio and editing suit
- Engineering workshops and robotics lab
- Esports suite
- Hair and beauty commercial salon and training academy
- Learning Development Centre
- Science labs
- Student Enrichment Centre and gym
- Training offices for business
- Training kitchens
- Training restaurant and Barista Coffee Shop
- Wellbeing Centre

5 minute walk to Swindon Train Station.
15 minute walk to the town centre (5 minute drive).
Regular bus services direct to the campus.
Free parking.

LEVELS EXPLAINED

		 New College Swindon APPRENTICESHIPS	 New College Swindon SIXTH	 New College Swindon TECHNICAL	 New College Swindon ADULT & PROFESSIONAL	 New College Swindon UNIVERSITY CENTRE			
Level		Apprenticeships	Academic	BTEC	T Levels	Access to HE	HNC and HND		Degrees
Higher Education	8								Doctorate
	7	Degree							Masters
	6						Top-up Degree	Top-up Degree	Degree (BA, BSc)
	5	Higher							
	4						HNC	HND	
Further Education	3	Advanced	A Levels	Extended Diploma Subsidiary Diploma	T Levels	Diploma			
	2	Intermediate	GCSE 9(A*) - 4(C)	Certificate/ Diploma					
	1	Traineeship	GCSE 3(D) - 1(G)	Certificate/ Diploma					
	E	Supported Internship		Award/Certificate					

CHOOSING YOUR COURSE

I HAVE ACHIEVED OR WILL ACHIEVE	WHAT LEVEL CAN I STUDY AT?	WHAT CAN I STUDY?	LENGTH	WHAT NEXT?
Six+ GCSEs at grade 7-9	Level 3	Join our High Flyers' programme and study an A level pathway (3 A Levels) OR Vocational course (L3)	2 years	University or employment or apprenticeship
Five GCSEs at grade 4-9 (incl English Language and Maths)	Level 3	A Level pathway (3 A Levels) OR Vocational course (L3) OR T-Level	2 years	University or employment or apprenticeship
Four GCSEs at grade 3-4	Level 2	GCSE pathway OR Vocational pathway (L2) AND English/Maths	1 year	Level 3 courses or apprenticeship
Three GCSEs at grade 2+	Level 1	Vocational courses (L1) AND English/Maths	1 year	Level 2 courses
GCSEs at grade 1 or below	Entry Level/1	Foundation Learning programme	1 year	Level 1 courses

SCAN HERE
TO LEARN MORE



Up-to-date entry requirements for each course can be found at www.newcollege.ac.uk

Entry requirements vary by subject and qualification type. The entry requirements published are meant as a guide only.

Some A Levels also require at least grade 6/B or have individual entry requirements. Some technical courses, including T Levels, may have specific requirements.

STUDY ROUTES



New College Swindon
SIXTH

A LEVELS

A two-year qualification that allows you to develop a broad range of academic skills and knowledge. Most students choose to study three subjects. They are traditionally a good entry route to university but can also lead to a career or an apprenticeship.

Assessment: Mainly by exams at the end of your second year.

GCSEs

You'll be familiar with GCSEs from school; at NCS we offer them as one-year courses.



New College Swindon
TECHNICAL

VOCATIONAL QUALIFICATIONS (INCLUDING BTECs)

Focus on a particular career or industry sector and give yourself the knowledge and practical skills to either go and work or train further in that area. We offer a range of levels from Entry Level to Level 3.

Assessment: Usually through course work, projects and assignments.

T LEVELS

Designed with leading employers, T Levels are two year qualifications, each equivalent to three A Levels. As a T Level student, 80% of your time is classroom-based and 20% is on an industry placement, to give you valuable insight and experience in the workplace.

Assessment: A combination of exams, course work, workplace reviews, an employer project and an end-point assessment.



New College Swindon
APPRENTICESHIPS

If you enjoy getting hands-on experience, then an apprenticeship might be for you. On average, you will spend 4 days a week at work and 1 day undertaking your studies. You will be working in a real job, earning a salary, with an employment contract and holiday allowance.

Assessment: Observations and assignments, with an end-point-assessment (EPA) which usually includes a practical demonstration of your skills as well as a discussion with an assessor.

SCAN HERE
FOR OUR CURRENT
VACANCIES!



bit.ly/3QmCPz6

YOUR STUDY PROGRAMME

1. Core Qualification(s)

Such as an A Levels, vocational qualifications, apprenticeship pathway, GCSEs or Foundation Learning programme.

2. English and Maths

If you have not achieved a grade 4/C in these subjects.

3. Tutorial

You will be assigned a progress coach at the start of your course. They will run weekly tutorial sessions and work with you to set and review individual targets.

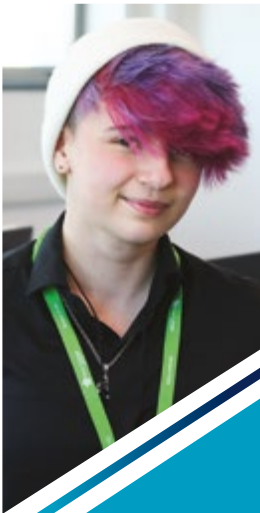
4. Careers Extra

No matter what qualification you are studying, you will have the opportunity to take part in a range of career and progression focused activities.

5. Enrichment

Choose from a range of enrichment courses in the following areas; Community Participation, Employability, Personal Development and Sport and Fitness.





"My experience of New College has been great. It gives you all of the skills that employers actually look for, rather than just having a qualification."

FE'LIX HENNIS

T Level in Digital Production, Design and Development

Careers Extra

As a student at New College Swindon, you are getting so much more than just a qualification. We will empower you with the tools, knowledge, and experiences you need to excel academically, professionally, and personally.

Designed to set you up for life beyond the classroom, Careers Extra is an exciting new initiative that forms a key part of your study programme and is linked directly to your chosen subject(s). You will have access to a wide range of career-focused opportunities that give you the skills, experience and confidence needed to make you stand out from the crowd.

Open up your world with work experience

Our study programmes allow you to undertake at least 30 hours of work experience or work-related activity during your course, right up to 350 hours (with T Levels which need 45 days).

Our Employability Team is here to help you all the way and ensure you get the maximum benefit from your placement - from advising on which employers to contact, checking that health and safety procedures/insurance are in place, right through to getting feedback at the end of your placement for you to use in future applications for work or university.

Recent work experience and initiatives have included Great Western Hospital, Catalent, BCS, Keepmoat, Ramsbury Brewing and Distillery, Steris, Wilmot Dixon, Geo-4D, Chronical Computing and Nationwide.

Careers and Higher Education Advice

The College's Careers Advisers can provide independent information, advice and guidance on your next steps after college. They will support you in understanding what path to take to get to your chosen job or career. Careers-related talks, presentations, visiting speakers and other events also run throughout the year as well as the chance for you to access individual support from the College Careers team.

We have invested in Career Pathways, an online tool that allows you to explore over 800 careers, providing detailed information about the possible roles along with salary and employment data. It will then help to match the best courses for your chosen career.

PARTNERS INCLUDE



WHAT DOES IT MEAN **FOR YOU?**

- Careers events
- Networking opportunities
- Employability skills
- Entry to industry skills competitions
- Curriculum designed with employers
- Working on live employer briefs
- Work experience
- Industry placements
- Employer talks and workshops
- Mock interviews

Alongside Careers Extra, our dedicated careers and work experience teams are on hand to support you in your future decisions for careers, work experience and placements.

TAKE A LOOK
FOR YOURSELF



SCAN HERE
TO LEARN MORE

bit.ly/47ltnmB





SCAN HERE
TO LEARN MORE



bit.ly/40DxQit

ENRICHMENT

Enrichment provides you with extra opportunities to learn through experience, learn new skills or continue an existing hobby or passion. It is a great way to relax, make new friends and settle into college life.

You will gain valuable soft skills, employability skills and fine-tune personal qualities, such as leadership, initiative, resilience and team spirit. All courses are designed to help prepare you for your future, whether this is going to university, gaining employment or preparing for adulthood. The skills you will develop are life skills.

At New College Swindon, enrichment can be experienced as a bespoke course which forms part of your main college programme or study pathway; or as a general cross college activity which is open to all college students.

Our enrichment courses are categorised into four key areas:

1. Community Participation

These activities encourage students to work for the benefit of others and to understand their impact on the world. They include charity and volunteering work whether undertaken in college, the local community, nationally or internationally.

2. Employability

These activities help students to progress to their next life stage and apply for university, jobs and apprenticeships. They develop necessary life skills such as interpersonal and communication skills, project and time management, presentation and negotiation skills as well as IT skills.

3. Personal Development

Activities which help to develop practical and social skills as well as personal interests.

4. Sport and Fitness

A wide variety of activities to keep fit, have fun and improve ability in a core sport, an area of dance or as part of a general fitness group.



"My college experience has been amazing. I've been able to get involved with various activities in and out of my courses. For instance, I've joined a few enrichments such as DofE, dance and student rep, where I have met so many new, lovely people."

**EMILY-KATE
PASTILJONE**

A Levels in Film Studies,
Textiles and English



"High Flyers gave me help with applying to university and allowed me to gain my EPQ early, which meant I could focus on my exams in my second year."

ROBIN KINGE

Robin (Nova Hreod) achieved AAA in English Literature, Sociology and Psychology at A Level and is now studying English Literature at The University of Edinburgh.

HIGH FLYERS PROGRAMME

Predicted to achieve six or more grade 7s at GCSE or demonstrate exceptional talent?
Then join our High Flyers' Programme!

This programme gives you:

- Extra support and information about study skills, revision techniques, accessing resources, debating skills, preparation for exams and coursework
- Support with university applications – preparing for UCAS, open days, and making decisions about courses; finding and applying for university access schemes and summer schools, including Reading Scholars, Access to Bristol, Pathway to Bath, and the Sutton Trust programme
- Information about applying for Oxbridge and Medicine via dedicated application groups. We have guest speakers from both Oxford and Cambridge to give you a better idea of what studying at these world-renowned universities is like
- The opportunity to apply for a High Flyers' scholarship (worth £200)

As a High Flyer, you'll have the opportunity to study a fourth A Level and/or the fast-track EPQ. The programme has an excellent track record of placing students at Top 20/Russell Group UK universities, including Oxford, Cambridge, Bristol, Bath, Warwick, Imperial, and Nottingham. If you achieve six grade 7s or above in your GCSEs you will automatically be invited to join the programme on arrival at College. Alternatively, you can also be nominated by one of your subject lecturers in your first two terms at College.

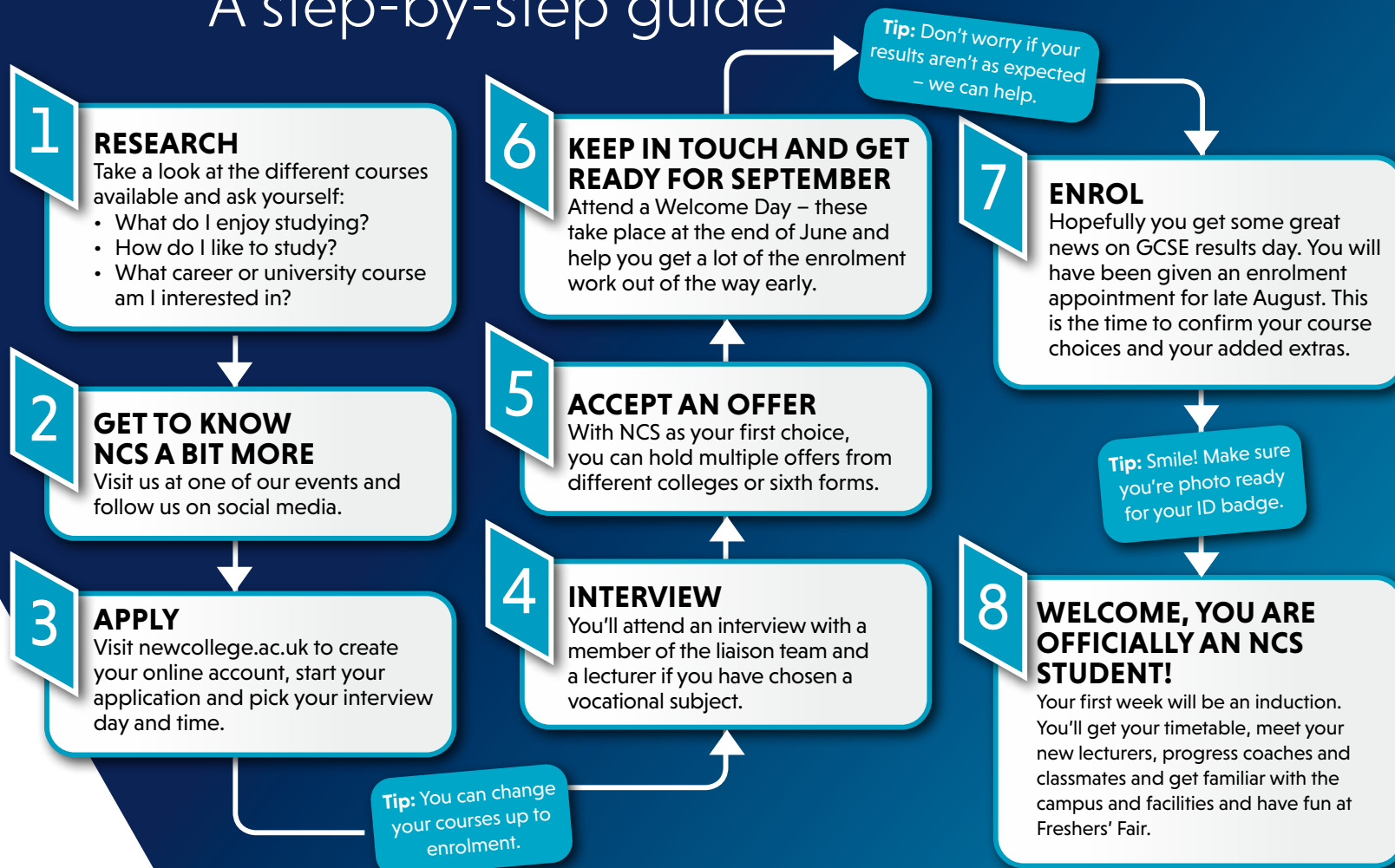
**SCAN HERE
TO LEARN MORE**



bit.ly/47invKU

YOUR APPLICATION JOURNEY

A step-by-step guide





"All staff are extremely supportive. Our wellbeing team helped make my first couple weeks easier. I was really nervous to start college as I didn't know anyone, but all the students are so nice and comforting and I have never felt lost."

LOTTIE SILANO

A Levels in Fine Art,
Graphic Design
and Textiles

SUPPORT FOR YOU

Mental Health and Wellbeing

We want your college experience to be a safe, happy and supported one. Looking after your wellbeing is a core priority for us all. We are proud to have been awarded the national 'Young People Friendly' award.

We have qualified nurses who provide general health advice, first-aid, help and support with medical conditions and where needed, referral to specialist services. We have Mental Health and Wellbeing Student Mentors based in the Wellbeing Room who provide:

- 1-to-1 and group support to help build self-confidence and resilience as well as tailored interventions where needed.
- Daily drop-in sessions
- Recommendations to teaching staff to support you in the classroom
- A quiet space to come to
- Signposting to internal support and external agencies
- Transition support when making the move from school to college.

There is also a team of trained counsellors who can offer more intensive support for a period of time if you need to explore issues that may be affecting your mental health.

Progress Coaches

If you are studying a full-time programme, you will be allocated a progress coach. This is your key point of contact for any help or support you may need, or any questions you may have. You can contact them via work mobile phones, Microsoft Teams, email or by dropping into their offices. They will set targets and regularly check your progress. Parents/carers can also contact them to discuss student progress and support.

Chaplaincy

Our multi-faith chaplaincy service provides spiritual support and guidance for those of all faiths or no faith. We can provide 1:1 support and guidance and a listening ear for you. We have a faith room which can be used for prayer or quiet thinking time.



togetherall

We work closely with an organisation called Togetherall to provide a 24/7 online support service for students who may be struggling with how they feel. The service is monitored by trained counsellors, who will step in if they have any concerns about your safety.

www.togetherall.com



SCAN HERE
TO LEARN MORE



bit.ly/478jSHg

ADDITIONAL LEARNING SUPPORT

If you have a physical or sensory impairment, learning differences such as dyslexia, dyspraxia, dyscalculia, Autistic Spectrum Condition or any other learning needs, our Additional Support Team can help you. Our dedicated team of qualified teachers and assessors offer an unparalleled level of support in the education sector, giving you the tools you need to maximise your learning potential.

We can provide*:

- 1:1 shared in-class support
- 1:1 specialist teaching, from teachers qualified to teach and assess students with specific learning differences
- Daily drop-in study skills sessions
- Access to examination arrangements
- Assistive technology and training to use this, i.e. Reading Pens, DocsPlus and the accessibility features embedded within Microsoft Office 365
- Those with a diagnosis of Autism and an EHCP have access to Mentor
- Those with a diagnosis of Autism also have access to a base room with pod chairs, bean bags, puzzles and games.

Evolve

This is a bespoke programme of education and/or training for employment that can ONLY be accessed by you if you have been issued an Education, Health and Care Plan by Swindon Borough Council, and are not able to access mainstream education.

Evolve will help to give you the personal skills and qualifications you need to take the next step in your life. You will undertake a range of activities that will help you to build confidence and a better understanding of yourself.

For more information email additionalsupport@newcollege.ac.uk

**Assessment may be required*

SCAN HERE
TO LEARN MORE



bit.ly/49mLOJq



FINANCIAL SUPPORT

You may be able to receive financial support to help cover the cost of course-related day-to-day costs such as books and travel. Our friendly Financial Support Team will be able to help and guide you through the process.

Discretionary Bursary

The 16 to 19 Bursary Fund provides financial support to help students overcome the specific financial barriers to participation they face so they can remain in education. Support may include help towards travel to college, books and study equipment costs, meals and childcare.

Learner Support Fund

We offer financial support to students aged 16 – 19, and 19+ (funding their course through the Advanced Learner Loan) to help with travel, course study equipment and the cost of attending trips, work placements, university interviews and open days. We can also offer support with childcare costs to support students to study.

Bursary for Vulnerable Groups

If you meet certain criteria and have a financial need, you can apply for a bursary for vulnerable groups of up to £1,200 per year if you are participating on a study programme that lasts for 30 weeks or more.

You should apply as soon as possible as the support funds are limited. Visit www.newcollege.ac.uk for more information, collect an application form from Student Finance at College, or email: studentservicesenquiries@newcollege.ac.uk for advice.

**SCAN HERE
TO LEARN MORE**



bit.ly/3G35Nzv

COLLEGE LIFE

We know our students achieve more when they have a good balance of social life, friendships and study. Student life is so much more than just your course and work, work, work - it's a time to have fun and socialise. It's a fresh start; the chance to work out exactly who you are as an individual and what's more, you'll always find someone like you.

We have great facilities and opportunities across both campuses for you to experience new things or follow your passion!

HAVE YOUR SAY!

Student Union

Once you're enrolled as a student here at New College, you automatically become a member of our student Union. This means you can access all of the college facilities, clubs, events and most importantly have your say about college life.

NC Exec

The college's student union is managed by our NC Exec committee. The NC Exec is run by students for our students. This team is made up of student executives and is led by our elected Student President and Student Vice Presidents who work in conjunction with our Student Governors.

The NC Exec committee helps to make key college-wide decisions, listens and shares with the college's principalship team as well as run cross college events along side our team of student representatives; namely our freshers' festival, social events and fundraising activities, themed weeks and awareness campaigns. Plus, promote TOTUM, the No. 1 leading student discount card.

Learner Voice and Student Representatives

New College has a very strong commitment to its students. We constantly seek their views and opinions and actively listen and respond to student requests via our Learner Voice scheme. In order to do this successfully, we encourage students to become student representatives. Our team of student reps lead on collecting student feedback as well as responding back to their peers.

There are plenty of ways for you to engage in college life:

- Complete our cross college surveys
- Take part in pop-up feedback activities and focus groups
- Take part in Learner Voice tutorial discussions
- Become a student rep
- Join a taskforce group
- Stand for election to become Student President or Student Vice President and lead the NC Exec
- Run for Student Governor to have your 'say' right at the top by taking a seat on the college's Board of Governors

Make sure you get involved, advocate for something you believe in, make a positive impact and evidence your leadership skills which look great on your UCAS personal statement or CV.



For more info on our fantastic enrichment programmes see page 12



SCAN HERE
TO LEARN MORE



bit.ly/40DxQit



"I have found being at College has enabled me to have more independence, be more in control of myself and complete my studies at a pace I'm comfortable with. There is a lot of support and my lecturers have been very helpful."

**SOPHIA
ALEXANDER-BROWN**

ABBEY PARK
A Level Criminology,
Psychology and
Level 3 Sport



A LEVELS AT NCS SIXTH

Set up as the first dedicated sixth form centre for Swindon in 1984, we've been delivering A Levels at Queens Drive for nearly 40 years and have a proven track record of helping students succeed and progress on to further study or employment.

WHAT ARE A LEVELS?

- 2 year courses which are linear (assessment at the end)
- Great entry routes to university or a career/apprenticeship
- Traditionally an academic, theory-based route, they now include practical elements, and a few have coursework as an additional form of assessment
- Choose from 35 different subjects
- We also have a selection of relevant vocational equivalents, which means there are over 8000 possible subject combinations.

Support and space to develop your study skills

Studying A Levels will develop your independent research and study skills which are essential for university study. We run supervised study sessions, but we also offer quiet study spaces within our Learning Resource Centre to help you develop these important skills yourself. Studying the Extended Project Qualification (EPQ) also develops your research, analytical and presentation skills.

General entry requirements for A Levels and equivalents

A minimum of five 4 grades at GCSE, one of which should be English Language (and often Mathematics).

Some A Levels also require at least grade 6 or have individual entry requirements - please check the course information for each A Level subject on our website.



Find out more about our
High Flyers programme
on page 14



SCAN HERE
TO LEARN MORE



bit.ly/3QRljCb



A LEVELS AND VOCATIONAL EQUIVALENTS

3D DESIGN: PRODUCT DESIGN

A highly practical course, which allows you to follow a broad and balanced study of 3D Design. You will follow an exciting and varied programme of work using a variety of techniques, processes and equipment in order to explore product and 3D design.

ACCOUNTING

Covers the purposes of accounting, the effects of change on accounting and the social implications of accounting decisions. Learn to organise and communicate accounting information in a logical format, including analysing and interpreting financial statements, and drawing conclusions for management decisions.

ANCIENT HISTORY

Delve into a crucial chapter of our human past. Learn about the civilisations and cultures of antiquity, from the Greek-city states to the Roman Empire. Use literary and archaeological evidence to piece together the past and explore the societies that became the foundation of the modern world.

APPLIED SCIENCE

(A LEVEL EQUIVALENT)

A BTEC National Level 3 Extended Certificate. Study four units: principles and applications of science; practical scientific procedures and techniques; science investigation skills; biological molecules and metabolic pathways.

ART AND DESIGN: FINE ART

Follow an exciting programme of work in painting and drawing, printmaking, 3D and mixed media, as well as modern techniques in photography, digital application and animation. Explore traditional forms of art in a range of techniques with contemporary subject matters.

ART: HISTORICAL PRACTICE

Follow an exciting programme of work through art history, contextual studies and artist research. Explore traditional forms of art in a range of techniques with contemporary subject matters. This will enrich and enhance the skills of any student that is looking for a career in art history, including curation. Any student studying A Level Fine Art would also benefit from studying Historical Practice.

BIOLOGY

Learn practical skills and undertake set investigations. Study key concepts and their applications including foundations in biology, exchange and transport, biodiversity, evolution and disease; communication, homeostasis and energy, and genetics and ecosystems.

BUSINESS

Learn how businesses operate and become successful. Topics include: marketing and human resources; financial management and business accounting; business decisions and strategy; international business.

CHEMISTRY

Develop your understanding of the processes which occur in nature and in new technological developments. Modules include: development of practical skills in chemistry; foundations in chemistry; periodic table and energy; core organic chemistry; physical chemistry and transition elements; further study of organic chemistry and analysis.

CLASSICAL CIVILISATION

This course will introduce you to ancient Greek and Roman civilisations. It will help you analyse and evaluate historical evidence in its context and learn about influential works of classical literature. It will also focus on the wider culture of these periods, and develop your understanding of ancient literature.

COMPUTER SCIENCE

Explore computational thinking and understanding of computer design. Learn the problem-solving and programming strands of Computing, alongside theory that covers topics such as computer architecture, networks and system development.

CREATIVE MUSIC INDUSTRY

(A LEVEL EQUIVALENT)

If you have a keen interest in Music Technology, then this is the course for you. It is also suitable if you wish to study modern digital styles of music production such as house, hip hop, drum and bass, electronica, as well as traditional studio recording techniques. Musicians with a strong interest in modern composition techniques will find the course useful, as well as singer songwriters wishing to produce their own music.

CRIMINOLOGY

(A LEVEL EQUIVALENT)

Covering the changing awareness of crime, criminological theories and crime and punishment. The course encompasses elements of psychology, law and sociology. You will explore why people commit crimes and how we deal with criminals. You will also study what happens at the scene of a crime, the forensic and police investigation process, how cases are prepared for trial and what happens in the courtroom at a criminal trial.





"English Literature gives you the freedom to explore many open ended, unique interpretations of one text. It enables creativity because there's no definitive answer and is a subject that will help you flourish intellectually."

RITCHIE KURZEJA

A Levels in English Literature, Ancient History and Philosophy

DANCE

(TWO A LEVEL EQUIVALENT)

This flexible course allows you to specialise and study different genres such as commercial, ballet, jazz and contemporary dance. You will have the opportunity to take part in several live performances, participate in competitions, and attend workshops led by industry professionals.

DIGITAL MUSIC PRODUCTION

(A LEVEL EQUIVALENT)

Suitable if you wish to study traditional studio recording techniques along with digital styles of music production such as house, hip hop, drum and bass. Useful for those with a strong interest in modern composition techniques as well as singer-songwriters wishing to produce their own music.

PERFORMING ARTS PRACTICE (DRAMA)

(A LEVEL EQUIVALENT)

This course will help improve your acting skills, understanding of scripts and staging through discussing, analysing and seeing plays, as well as rehearsing and performing them. You will be involved in various performances and workshops, helping you to develop an understanding of what an actor, director and designer does. You will also explore how plays move from page to stage.

ECONOMICS

The flexible syllabus allows us to cover a wide range of topical issues, ensuring your studies will be relevant to economic events and the real world. Study microeconomics, looking at the behaviour of individuals, firms and markets. Explore how governments can increase economic growth, reduce inflation and unemployment, deal with recessions and the problems of high government and consumer debt.

You can also study Economics B, which combines economics with business.

EXTENDED PROJECT QUALIFICATION (EPQ)

The EPQ is excellent preparation for university study. Research a subject of your own choosing and develop a 5,000 word report or an artefact. Alongside your research, document your progress in a production log, and communicate your findings in a presentation at the end of the course. Some universities (such as Southampton, Bristol, Manchester and Reading) may give you a reduced university offer if you complete the EPQ.

ENGINEERING

(A LEVEL EQUIVALENT)

This Extended Certificate course develops your knowledge and understanding of: mathematical techniques used to solve a range of engineering problems; the principles and applications of engineering science; the principles of mechanical, electric and electronic engineering.

ENGLISH LANGUAGE

Understand the role language plays in your life and answer questions such as: How and why does language vary? How do we acquire language skills and how do they develop and change? What role does language play in our sense of identity and our relationships?

ENGLISH LANGUAGE AND LITERATURE

Develop your awareness of the ways we communicate: how people talk and how authors write for different purposes and audiences. Study a range of fiction, nonfiction, poetry and drama, developing your skills of analysis and judgement. Learn to recognise and practise effective presentation, logical argument, persuasion, and lucid, fluent expression.

ENGLISH LITERATURE

Study texts from various eras. Current set texts are *The Great Gatsby*, *Othello*, *The Help*, *A Streetcar Named Desire*, *Feminine Gospels*, *The Picture of Dorian Gray* and the AQA Poetry Anthology. Modules include: love through the ages and modern times; literature from 1945 to the present day; texts in shared contexts. On completion, progress to any degree course in this or a related subject. Your communication skills will improve along with your ability to make assertions and maintain a line of reasoning.

ENVIRONMENTAL SCIENCE

Study the impact of human activity on the environment and explore ways in which we can help create a sustainable future. This course takes a scientific approach to the study of the environment, what impacts it, how humans manage it and the many sustainability issues affecting it.

FILM STUDIES

Gain knowledge and understanding of a diverse range of films and the significance of film and film practice in a variety of contexts. Explore film and its key contexts (including social, historical and political) and understand how films generate meanings and responses from spectators. Production work is a crucial part of this specification and is integral to learners' study of film.

FURTHER MATHEMATICS

For keen maths students wishing to gain a second Maths A Level. You will develop advanced algebraic techniques together with the ability to analyse and solve real-life problems. Topics include: advanced pure maths; advanced statistics and advanced mechanics. A Level Maths and Further Maths together provide an excellent foundation for the study of maths at university and are also recommended for Physics or Engineering. You must study Maths A Level to study Further Maths.

GEOGRAPHY

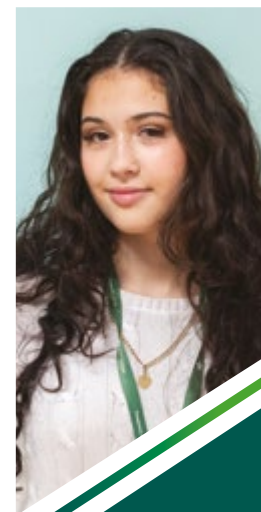
Develop your understanding of issues that will affect you for the rest of your life: climate change and global warming, increased coastal and river flooding, overpopulation and globalisation. Explore the processes that are shaping, and the challenges facing, the natural and human environment.

GRAPHIC DESIGN AND ILLUSTRATION

Explore all aspects of contemporary graphic design, including advertising and packaging, typography, animation, illustration and computer graphics. You will experience real 'live' commissions and competitions from external clients, where accurate interpretation, creative ideas and keeping to deadlines will be an important factor.

HISTORY: BRITISH AND AMERICAN 20TH CENTURY

Discover how America became the superpower that it is today; from 1865-1975, after the Civil War to the end of the Vietnam War. How is America governed? What are its attitudes to foreign powers? Is there equality? Investigate how Britain has changed between 1951-2007. Study developments in the Welfare State, the Thatcher Revolution and the changing lives of British people.



"The courses I chose are suitable for me and I really enjoy them. My lecturers so far have been very supportive."

CARLA ISACOV

A Levels in English Literature, Criminology and History



*"I'm really enjoying
all of my courses,
as well as
my enrichment
option, Mind
Stretching Maths."*

ARCHIE THOMAS

A Levels in Maths, Physics
and Product Design

HISTORY: BRITISH AND EUROPEAN 20TH CENTURY

Explore the development of Germany from its unification in 1871, through to reunification following the Cold War in 1991. You will also study modern British history from 1951- 2007; politics, foreign policy, society and the economy. A third unit focuses on Italian unification, providing the opportunity to develop academic writing and research skills. On completion, progress to a history degree at university.

LAW

Learn how the Law affects every aspect of your life. Topics include: the English legal system, the judiciary, criminal law and the law of tort. Law is relevant to many careers: banking, accountancy, estate agency, insurance, any business career, and the law itself. A Level Law is not required to enter the legal profession, but could help you to decide whether you want to pursue this career idea. Most universities welcome students with evidence of prior study of Law at any level.

MEDIA STUDIES

Explore and analyse how the media communicates with its audiences focusing on the major media forms of TV, film, radio, music, print media and websites. Covers media language, representation, media audiences and industry and the three key areas of television, magazines and online media.

MATHEMATICS

Develop your skill and confidence in using maths in a wide range of situations. You will be able to use algebraic notation with confidence and competence, analyse real life problems and discuss mathematical ideas. Many degree courses have maths as an entry requirement. The statistics topics are good preparation for careers including business, economics, finance and accountancy, whilst the mechanics topics are good preparation for engineering, technology, or science.

MUSIC PRODUCTION

(A LEVEL EQUIVALENT)

This course is included within the Creative Studies A Level pathway as a RECOMMENDED CORE subject. It is included in the following pathways as a RECOMMENDED ADDITIONAL SUBJECT: Design and Media; English and Communications; Performing Arts. However, you can take Digital Music Production with any A Level/equivalent combination – there is plenty of choice and flexibility.

MUSIC PERFORMANCE

(A LEVEL EQUIVALENT)

If you have an interest in Music Performance, then this is the course for you. Whether you are a singer-songwriter, jazz pianist, classical violinist, rock drummer or blues guitarist, we welcome all instruments and all genres. Over the 2-year course, you will have the opportunity to develop your own artistic voice through regular rehearsals and live performances. Alongside this, you will study music theory and learn a range of compositional techniques to furnish you with the skills to write and record your own songs/pieces.

PHILOSOPHY

What is real? Is the truth out there? Is there such a thing as God or right conduct? And how do we go about finding out? Explore these and other fundamental questions about ourselves and the world. Develop critical and reasoning skills through studying major themes such as epistemology, moral philosophy, philosophy of religion and philosophy of mind. Philosophy strengthens your ability to analyse, to reason more effectively and to make sound judgements.

PHOTOGRAPHY

Explore who you are as a photographer and what you want to show through your images. Research the work of photographic artists and acquire skills in camera, studio and image editing techniques. Explore: depth of field to control focus; shutter speed to manipulate movement; studio lighting; genres; post-production in Photoshop; printing and presentation techniques.

PHYSICS

Explore the phenomena of the universe and to look at theories that explain what is observed. Developing strong analytical and research skills, study a range of areas including: forces and motion; electrons, waves and photons; quantum physics; astrophysics; particles and medical physics. You will develop skills through performing practical activities. Physics is widely regarded as one of the most challenging A Level subjects and is essential for entry into most engineering degree courses and careers. You must study A Level Maths to study Physics.





"My experience at college has been good, everyone has been very welcoming and willing to help. The college offer a range of support with independent studies and I have had a lot of freedom compared to school."

CALLUM TREGUNNA

A Levels in Maths,
Criminology and
Level 3 Sport

POLITICS

Study contemporary politics and ideologies to gain an understanding of the factors shaping both the British and American systems. Explore the key issues that shape this country and America, such as Biden's presidency and Brexit. Units cover issues such as: the power of the Prime Minister; the workings of Parliament; the role of elections and the power of the US president.

PSYCHOLOGY

Psychology is the scientific study of mind and behaviour. Study the process of development, how changes influence us throughout life, and the issues involved in mental illness. Explore how the brain functions and controls aspects of behaviour. Conduct experiments, examine results and ethical implications of studying and treating people.

RELIGIOUS STUDIES

Explore deeper questions about God, ethics and the meaning of life. You will cover three elements across religion and philosophy: Christian beliefs and practices; arguments used to prove the existence of God; theories such as utilitarianism, natural moral law and situation ethics. This A Level develops writing and analytical skills and is considered to be good preparation for most Arts degrees.

SOCIOLOGY

Sociology is the study of how people create society through relationships and the ways in which society shapes people's behaviour and ideas. Study topics such as: education, crime and deviance and religion. Explore ideas around power, identity, socialisation and social control. You will question so-called 'taken-for-granted' views of society and individuals. This is a thought provoking subject and useful in a variety of situations: academic, social, business and welfare.

SPANISH

Learn to express yourself more fluently and confidently; develop your ideas and opinions on topics relevant to young people and practise listening, speaking and reading skills. Topics include: social issues and trends; artistic culture; grammar; literary text and film; multiculturalism in historic society and aspects of political life.

SPORT AND EXERCISE SCIENCE

(A LEVEL EQUIVALENT)

Develop your knowledge and understanding of theoretical and practical aspects of sports science. This course allows you to also undertake other A Levels alongside the programme.

TEXTILES AND FASHION

You will use a variety of media, processes and equipment in order to explore and experiment with textile design and surface pattern. Textile techniques and artists include: print, sublimation, relief/silk screening, embroidery, applique, free motion embroidery, hand embroidery and felt making.





"The courses are engaging, challenging and thought provoking. The lecturers are passionate and professionals in their field. I plan to continue my study at New College, and hope to take my A levels. After A levels, I hope to go to university and study ancient history."

ETHAN LORD

GCSEs in Maths, Physics, Chemistry, English Language and Ancient History



GCSEs AT NCS SIXTH

We have an excellent choice of GCSEs, which are taught over one year at our Queens Drive campus.

Are GCSEs for me?

GCSEs are for you if you are a Pre-16 student (aged 14-16) or if you need to achieve GCSEs before progressing to Level 3.

How many GCSEs will I study?

Most students undertake a GCSE pathway, consisting of four GCSEs (three for Pre-16s) or vocational equivalents with wrap-around components including enrichment, work experience, and tutorials which will help you develop personal, social and employability skills.

ENGLISH MATTERS. MATHS COUNTS.

Whatever your future, you will need GCSE English and Maths to go on to further study, compete for jobs and to help with life skills. We have a variety of english and maths qualifications. All students without a grade 4 or above in these subjects continue to study them as part of their timetables, at both our North Star and Queens Drive campuses.

You will be placed on a suitable course, based on assessments and your previous qualifications. We can help you achieve by offering different teaching styles - traditional classroom, e-learning and practical workshop.

SCAN HERE
TO LEARN MORE



bit.ly/3RduvDu

GCSES

AND VOCATIONAL EQUIVALENTS

ANCIENT HISTORY

Study the Persian Empire, 559-465 BC, under Cyrus the Great, Cambyses II, Darius I and Xerxes I. Also the foundations of Rome: From Kingship to Republic, 753-440BC, focusing on the Kings of Rome and the early Roman Republic, with an emphasis on the most exciting and interesting events and characters.

ART AND DESIGN

This is an exciting course that will give you the opportunity to discover and try out a range of disciplines, including: fine art, graphic design, textile design and 3D design. You will complete a range of creative and interesting projects across these disciplines, which will culminate in a portfolio of work that you can use to progress to either A Levels or vocational art and design related subjects.

ART AND DESIGN (GRAPHICAL COMMUNICATION)

Explore the process of designing primarily visual material to convey information, ideas, meaning and emotions in response to a given brief. Learn about a variety of areas such as design for print, advertising and branding, illustration and typography.

ART AND DESIGN (TEXTILES)

This course will introduce you to the exciting world of Textile Design. This is the process of creating samples and designing products through a variety of techniques including printing, stitching, knitting and weaving. You will complete a range of creative and exciting projects, which will culminate in a portfolio of work.

BIOLOGY

How do human bodies respond to changes inside them and to their environment? What are animals and plants built from? Explore these and other questions while learning about the development of scientific ideas and issues associated with technological advances.

BUSINESS

Learn the theories and techniques that help business organisations to make decisions. Study the functional areas of a business, including finance, marketing and operations management.

CHEMISTRY

Chemistry is the study of the composition, structure, properties and interaction of chemicals. These underpinning principles are used to study interesting topics including the environment, the atmosphere and materials.

CREATIVE MUSIC INDUSTRY

(GCSE EQUIVALENT)

You will learn how to use music sequencing and production software/hardware in a range of musical styles. You will also learn how to record different instruments and vocals in the recording studio.

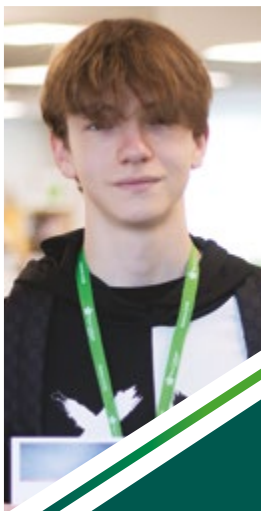
ENGLISH LANGUAGE

Develop your ability to write and speak effectively, as well as to listen, read and respond with understanding. Study a range of fiction and non-fiction texts, along with how to write an effective story and other texts such as letters, speeches and articles.

FINANCIAL EDUCATION (LIFC)

(GCSE EQUIVALENT)

Develop the skills and knowledge needed to manage your money effectively and make sensible financial decisions. You will also gain a wider understanding of public finance and the economy.



"My lecturer is really helpful and checks in to make sure how I am doing. I have really enjoyed the courses, the teachers are great, they make the lessons easier and always make sure you are doing well."

BENJAMIN SPENCER

GCSEs in Maths, English
Language and Music

GEOGRAPHY

This course develops your communication skills as well as your graphical, cartographical and ICT skills. Study three main areas: living with the physical environment, challenges in the human environment and geographical applications.

HIGHER PROJECT QUALIFICATION (HPQ)

Are you better at coursework than exams? Are you organised and self-motivated? Can you organise your own time? If so, then the HPQ, an independent research project could be for you. This course is beneficial in supporting your other GCSEs and developing skills that are required for A Level study.

HISTORY

This course covers four units: The reigns of King Richard and King John; Warfare from c.1250; Weimar and Nazi Germany 1918-39 and Superpower relations and the Cold War 1941-91.

MATHEMATICS

You can enrol on Foundation GCSE which can award grades 1 to 5, or, if you are stronger in maths and wish to pursue a higher grade, you can request to study GCSE Higher, which can award grades 3 to 9. The main focus in both of these pathways is the development of specific maths skills in number, ratio, algebra, geometry, statistics and data. There is also a strong focus on logical thinking and problem solving. This is an extremely important qualification - it is highly valued by employers and required by many universities.

MUSIC

This exciting course will develop your interest and understanding of how music is created, through a practical approach. It focuses on your abilities to listen to, perform, compose and appraise music through a wide variety of areas of study. You study five different areas, giving you a greater knowledge and understanding of music. Topics include: my music; the concerto through time; rhythms of the world; film music; conventions of pop.

MUSIC PRODUCTION (GCSE EQUIVALENT)

This course is a great introduction to music technology. It is suitable for anyone who has a keen interest in music technology, enjoys creating and listening to different styles of music, and who wishes to extend their practical experience. You will learn how to use music sequencing and production software/hardware in a range of musical styles. You will also learn how to record different instruments and vocals in the recording studio.

PHOTOGRAPHY

This course introduces you to a variety of experiences; exploring a range of photographic techniques, processes and equipment and a range of photographic examples, from the past and from recent times.

PHYSICS

A wide-ranging course that deals with matters as diverse as how to wire a plug to how the universe was created! You should be curious about how the natural world and the manmade world work, and be able to put together different ideas to produce logical conclusions.

PSYCHOLOGY

Psychology is the study of human behaviour. You will learn to appreciate the importance of experimental and other investigatory work and develop an awareness of the usefulness, and limitations, of the scientific method.

SOCIAL STUDIES (CITIZENSHIP)

Investigate how the citizen is enabled by society to play a full and active part and how citizens can effect change. It includes topics such as life in modern Britain, rights and responsibilities and politics and participation.

SOCIOLOGY

Sociology is the study of human society and social groups. It aims to increase our understanding of the social world by looking at how social structures such as families, education, employment and the media have an effect on our individual behaviour.

SPANISH

Listen to Spanish, learn to speak it yourself, read what others have written and put your own thoughts on paper. You will also be introduced to translation. By the end of the course, you will be able to hold a conversation and write communications in Spanish.





"The best thing is that at the end of my apprenticeship, not only I will have a qualification and years of experience on the job, but also, I will have built up a big network of connections at the workplace.."

**BEATRICE
JURGAITYTE**

Level 3 Apprenticeship
in IT Solutions



New College Swindon

APPRENTICESHIPS

GET PAID. GET QUALIFIED.

WHAT IS AN APPRENTICESHIP?

An apprenticeship is a genuine job with a real employer - it is a great way to earn while you learn and gain valuable skills and knowledge that are relevant to the specific job role you will be doing.

You will finish with a qualification, experience in the workplace, a possible permanent job, plus no student debt!

You will receive training and assessments in work and for most apprenticeships formal 'off-the-job' training at College, which you will put into practice in your working environment.



DURATION

Apprenticeships must last for at least a year. They can last up to 5 years, depending on the level and the needs of you and the employer.



SALARIES

There is a national minimum wage for apprenticeships; although many of the employers we work with pay significantly more than this.



LEVELS

Apprenticeship programmes are designed for different career pathways, providing training and qualifications from GCSE level through to degree level.





SCAN HERE
TO LEARN MORE



bit.ly/46DKlf8



"I have always found it easy to work with New College Swindon when looking for apprentices. They are great at giving advice, explaining the systems and navigating the online apprenticeship portal. They always respond quickly and offer a superb apprenticeship service."

CAROL WILLIS
CEO

Voluntary Action Swindon

WHAT DOES AN APPRENTICESHIP INVOLVE?

Qualification

In some cases, we include an additional industry qualification.

Functional Skills

(Maths, English and ICT at Level 2)

If you do not hold the relevant qualifications in English and Maths, you will be required to undertake and pass the relevant Functional Skills during your apprenticeship (depending on entry requirements).

Knowledge, skills, and behaviours

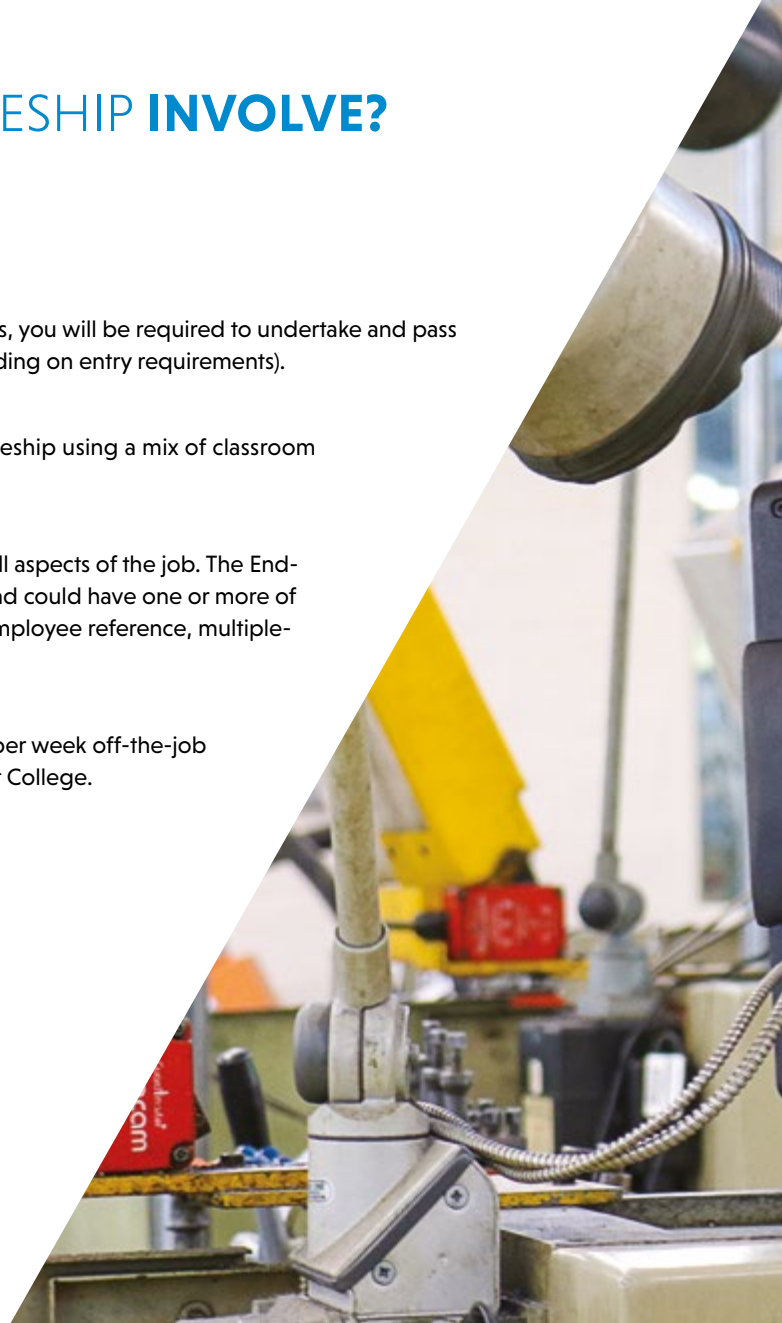
You will receive full training on these elements of the apprenticeship using a mix of classroom sessions, on-the-job assessment, and assignments.

End-Point Assessment (EPA)

You will be assessed at the end, to prove that you can carry out all aspects of the job. The End-Point Assessment is determined by the type of apprenticeship and could have one or more of the following elements: interview, presentation, project work, employee reference, multiple-choice tests, observations and portfolios.

Off-the-job training

All apprentices are required to complete a minimum of 6 hours per week off-the-job training, within working hours. This will include taught sessions at College.







VOCATIONAL COURSES

WHAT ARE VOCATIONAL COURSES?

Vocational courses help you learn in a practical way about a specific job area. They can help you get the skills you need to start a job, progress in a career or go on to higher education.

Vocational students can often be better prepared in terms of the independent studying that is required at degree level, due to the portfolio-based nature of courses. The time management and self-organisation skills that you will develop also give you an added edge.

When it comes to progressing straight to a job or career, students who have studied these courses have valuable experience gained from undertaking real life practical tasks and work experience placements.

- At Level 3, most vocational courses last for two years and are the equivalent of studying three A Levels.
- At Level 2, most vocational courses last for one year.
- Vocational qualifications at Level 3 are ideal for your progression to either university or work. 95% of UK universities and colleges accept BTEC qualifications.

What we offer

BTECs and other vocational and technical qualifications, including T Levels, across a wide range of subject areas and levels, from Entry Level right up to Level 6 and beyond.

This prospectus focuses on vocational courses at Levels 1-3, as these are the ones where most school leavers and adults start their learning journey.

"New College was a great place to study; it felt like a second home and I enjoyed every bit of it! There's access to fantastic media equipment on the Creative Media HND. Studying the course helped me decide to go on to do a top-up year at Bournemouth University."

HENDRY LUI

Hendry completed media courses at Levels 2 and 3 and progressed to study an HND in Creative Media.



General entry requirements for vocational qualifications

I HAVE ACHIEVED OR WILL ACHIEVE	WHAT CAN I STUDY?	LENGTH	WHAT NEXT?
Six+ GCSEs at grade 7-9	Vocational course at Level 3/T Level	2 years	University or employment or apprenticeship
Five GCSEs at grade 4-9 (incl English Language and Maths)	Vocational course at Level 3/T Level	2 years	University or employment or apprenticeship
Four GCSEs at grade 3-4	Vocational course at Level 2 and English/Maths GCSEs	1 year	Level 3 courses/ T Level or apprenticeship
Three GCSEs at grade 2+	Vocational course at Level 2 and English/Maths GCSEs	1 year	Level 2 courses
GCSEs at grade 1 or below	Foundation Learning programme (Entry Level/Level 1)	1 year	Level 1 courses

Some A Levels also require at least grade 6 or have individual entry requirements - please check the course information for each A Level subject on our website.

These entry requirements are only a guide. You should check entry grades on the relevant course page on our website.

SCAN HERE
TO LEARN MORE



bit.ly/49RgH94





**SCAN HERE
TO LEARN MORE**
bit.ly/47Pftcr

ANIMAL MANAGEMENT

Passionate about the welfare of animals? Want to work with them as part of your career? Then this area is for you!

FUTURE CAREERS

- Kennel or Cattery Worker
- RSPCA Officer
- Veterinary Assistant
- Assistant Dog Trainer
- Wildlife Rescue Technician

PROGRESS WITH US

	LEVEL 1	LEVEL 2	LEVEL 3	LEVEL 4+
VOCATIONAL	●	●	●	
APPRENTICESHIP		●		
UNIVERSITY CENTRE				●

"The ability to gain experience with animals ranging from rodents to sheep is very beneficial for working wider within the field. Every practical session is unlike the last!"

ABIGAIL STEPHENS

Level 3 Animal
Management

OVERVIEW



Our brand new Animal Management Centre opened in September 2023 and offers a wide variety of habitat environments and species of animals for you to gain hands-on experience with on a daily basis.



We have a growing collection of small mammals, reptiles and birds. Through partnerships with local organisations, you will also work with larger mammals and companion animals.



Lecturers with plenty of industry experience, working in zookeeping, farming, rehabilitation and veterinary settings.



Work experience is a key part of these courses, providing opportunities to create links with potential future employers.



T LEVEL ANIMAL MANAGEMENT

LEVEL	CAMPUS	LENGTH
3	NORTH STAR	2 YEARS

You will focus on the skills and knowledge needed for the practical care and breeding of animals in a range of settings covering issues relevant to the sector, such as: nutrition and food preparation; animal welfare; regulations for working with animals; sustainability; health and safety; business and finance skills.

Includes a minimum of 45 days working with an employer on an industry placement.

TECHNICAL DIPLOMA ANIMAL CARE

LEVEL	CAMPUS	LENGTH
2	NORTH STAR	1 YEAR

This course covers: animal health; animal welfare; feeding; accommodating/moving animals and an introduction to biology. You will also undertake a work placement, enabling you to further develop your skills in a real industry environment.

INTRODUCTORY DIPLOMA LAND-BASED (ANIMAL CARE)

LEVEL	CAMPUS	LENGTH
1	NORTH STAR	1 YEAR

You will take part in practical lessons to develop your animal handling techniques, such as learning how to feed and meet the needs of animals. The course also covers estate maintenance skills, such as the upkeep of animal accommodation and repairing fencing.

APPRENTICESHIP ANIMAL CARE AND WELFARE ASSISTANT

LEVEL	CAMPUS	LENGTH
2	NORTH STAR	12 MONTHS

As an Animal Care and Welfare Assistant you will look after the routine day-to-day care and breeding of domestic and/or wild animals under supervision. Your work will be carried out individually or as part of a team and you could be working in any number of places such as: kennels and catteries, laboratories, animal welfare centres, farm parks, rehabilitation centres or retail outlets.







**SCAN HERE
TO LEARN MORE**
bit.ly/47QZXwC

APPLIED SCIENCE

If you are naturally curious and have a keen interest in transforming experimental findings into practical solutions, these courses are tailor-made for you.

FUTURE CAREERS

- Laboratory Technician
- Forensic Scientist
- Marine Biologist
- Biomedical Engineer
- Pathologist
- Research Scientist

PROGRESS WITH US

	LEVEL 1	LEVEL 2	LEVEL 3	LEVEL 4+
VOCATIONAL			●	
APPRENTICESHIP			●	●
SAWIoT				●

"My teachers are very open to my opinions and college is very welcoming. After I finish my studies I want to study veterinary science at university."

SHOBEL NUNES
Level 3 Applied Science

OVERVIEW



Applied Science courses focus on the practical side of science, while underpinning the theoretical side. It's about more than just memorising facts and figures, it's about solving real-life problems and making new discoveries.



Imagine using your scientific knowledge to analyse crime scenes, develop new technologies, or contribute to advancements in healthcare and medicine.



Learn from highly qualified lecturers, with industry experience or degrees and postgraduate qualifications in science subjects.



Access to state-of-the-art laboratories and equipment.



T LEVEL LABORATORY SCIENCE

LEVEL
3

CAMPUS
QUEENS DRIVE

LENGTH
2 YEARS

You will cover core components including aspects of physics (radioactivity, electronics, materials), chemistry (atomic theory, chromatography, titration analysis, catalysts and chemistry practical techniques) and biology (microbiology, infectious diseases and immunity, staining techniques and cell analysis, genetics and DNA), and working in the science sector.

During the two years, a minimum of 45 days of work placement is undertaken.

EXTENDED DIPLOMA APPLIED SCIENCE

LEVEL
3

CAMPUS
QUEENS DRIVE

LENGTH
2 YEARS

You will study across all three sciences: biology, chemistry and physics. You will cover topics including: fundamental chemical and physical principals; structure and function of cells; physiology and disease; electrical circuits and their application; forensic evidence; amongst many other fascinating areas of cutting-edge science.

For applied science equivalent to one A Level, see page 24.

APPRENTICESHIP LABORATORY TECHNICIAN

LEVEL
3

CAMPUS
QUEENS DRIVE/
NORTH STAR

LENGTH
18 MONTHS

In this role you would be involved with data analysis, scientific development, preparation of scientific equipment and ensuring safety. This could be working in a range of settings including: pharmaceutical; biotechnology; nuclear; analytical science services; research schools and hospitals.



SCAN HERE
TO LEARN MORE
bit.ly/3uv1aLP

ART, DESIGN AND PHOTOGRAPHY

Our creative arts courses are perfect if you have a passion for visual expression and a desire to use your creative energy to explore various art forms.

"My teachers helped me through everything, I don't think I could have done it without them. The exhibition and trips were my highlights."

NIKITA IHRING

Nikita achieved D*D*D* in BTEC Extended Diploma in Art and Design Practice (Photography) at Level 3. She is now studying an Editorial and Advertising degree at the University of Gloucestershire.

FUTURE CAREERS

- Graphic Designer
- Photographer
- Artist
- Art Director
- Illustrator
- Animator
- Product Designer
- Fashion Designer

PROGRESS WITH US

	LEVEL 1	LEVEL 2	LEVEL 3	LEVEL 4+
VOCATIONAL	●	●	●	●
APPRENTICESHIP				
UNIVERSITY CENTRE				●

OVERVIEW



Whether you're a budding painter, a design enthusiast, an aspiring photographer, or someone who wants to make beautiful textile pieces, we will help develop your artistic abilities and turn your passion into a career.



Be inspired by lecturers who have commercial experience and are artists, designers and photographers themselves, with exhibitions and artwork in regional and national galleries.



Access to amazing facilities including: art studios, design studios, photography studio and photography dark room.



Opportunities to experiment with various mediums, techniques, and styles to find your unique artistic voice.



FOUNDATION DIPLOMA ART, DESIGN AND MEDIA PRACTICE (ART AND DESIGN)

LEVEL 3/4	CAMPUS NORTH STAR	LENGTH 1 YEAR
--------------	----------------------	------------------

Explore various creative areas including: fine art, textiles, graphics, illustration, printmaking and sculpture. You will be introduced to a range of techniques and processes via workshops and project briefs and produce a final major project, a review and an exhibition. These will draw on the skills, knowledge and techniques you have developed throughout the course.

EXTENDED DIPLOMA ART, DESIGN AND MEDIA PRACTICE (ART AND DESIGN)

LEVEL 3	CAMPUS NORTH STAR	LENGTH 2 YEARS
------------	----------------------	-------------------

You will explore: creative typography techniques; magazine design; branding through packaging and logo design; drawing; painting; print making; ceramic techniques; studio and location photography. Your portfolio of work will be generated through practical projects, workshops and engagement with industry.

EXTENDED DIPLOMA ART AND DESIGN CREATIVE PRACTICE (TEXTILES, FASHION, INTERIOR AND COSTUME)

LEVEL 3	CAMPUS QUEENS DRIVE	LENGTH 2 YEARS
------------	------------------------	-------------------

You will explore, experiment and research a range of textiles media and techniques. You can develop your portfolio in garment/fashion/costume, accessories, textiles, interiors/soft furnishings, printed/dyed textiles, constructed textiles, textile installation, expressive/fine art textiles, and digital textiles.

EXTENDED DIPLOMA ART AND DESIGN CREATIVE PRACTICE (PHOTOGRAPHY)

LEVEL 3	CAMPUS QUEENS DRIVE	LENGTH 2 YEARS
------------	------------------------	-------------------

You will have access to professional standard facilities of a photographic studio, professional lighting, black and white darkroom and film processing lab. This hands-on experience will allow you to transform your passion for photography into a creative profession. You will work on exciting projects that include shooting your own work and research and academic writing, developing a range of technical skills, a personal style, and enhancing your knowledge of the specialism.

EXTENDED CERTIFICATE/DIPLOMA ART AND DESIGN SKILLS

LEVEL 2	CAMPUS QUEENS DRIVE	LENGTH 1 YEAR
------------	------------------------	------------------

Gain a broader understanding of the art and design industry, through workshops, demonstrations and live briefs. You will learn about many of the techniques and disciplines used, such as: mark making, print, illustration, 3D, and textiles. As part of the course, you will explore, develop and produce a variety of pieces, which will be collated into an art portfolio.

INTRODUCTORY DIPLOMA VOCATIONAL STUDIES (CREATIVE)

LEVEL 1	CAMPUS QUEENS DRIVE	LENGTH 1 YEAR
------------	------------------------	------------------

You will be involved with lots of exciting, highly practical projects and lessons throughout this course. This course offers insight into different creative sectors and the opportunity to demonstrate and enhance your artistic skills through a carousel of units. The course covers a wide range of specialisms, from which you will study different creative units, such as: creating an art image; creating a mood board; growing plants; contributing to an event; designing a product.







SCAN HERE
TO LEARN MORE
bit.ly/3uyNU9f

BUSINESS, ACCOUNTING AND FINANCE

Do you want to understand the inner workings of businesses both big and small? If you have ever wondered what it takes to run a successful company or how to turn a business idea into reality, these courses will provide the ideal foundations.

FUTURE CAREERS

- Business Analyst
- Business Owner
- Bank Manager
- Financial Adviser
- Marketing Manager
- Human Resource Business Partner
- Project Manager
- Events Coordinator

PROGRESS WITH US

	LEVEL 1	LEVEL 2	LEVEL 3	LEVEL 4+
VOCATIONAL	●	●	●	
APPRENTICESHIP		●	●	●
UNIVERSITY CENTRE				●

"The courses were well executed with additional support from the lecturers, who always encouraged me to aim for the highest grades."

NELIA CORTEZ

Nelia (Swindon Academy) completed an Extended Diploma in Business at Level 3 and is now studying HND Business at New College Swindon.

OVERVIEW



In the fast-paced world of business, there are many career opportunities. You could find yourself working in a bustling financial district, helping start-ups flourish, or even launching your own business empire.



Learn from lecturers who have real industry experience and specialist qualifications.



Through practical activities and work experience, you will develop highly transferable skills such as problem-solving, teamwork and communication. From managing events and developing business plans to pitching ideas to external professionals and undertaking mock interviews.



T LEVEL **ACCOUNTING**

LEVEL
3

CAMPUS
NORTH STAR

LENGTH
2 YEARS

You will gain an in-depth understanding of context, concepts, theories, principles, and core skills in accounting. The breadth of content will ensure you are able to apply your skills in a variety of environments for different accounting purposes.

Includes a minimum of 45 days working with an employer on an industry placement.

T LEVEL **FINANCE**

LEVEL
3

CAMPUS
NORTH STAR

LENGTH
2 YEARS

You will be developing team and professional skills to get you ready for employment, as well as all the essential knowledge needed for a career in the financial sector. During the course, you will be able to focus on a number of specialist areas which could include retail or investment banking.

Includes a minimum of 45 days working with an employer on an industry placement.

T LEVEL **MANAGEMENT AND ADMINISTRATION**

LEVEL
3

CAMPUS
NORTH STAR

LENGTH
2 YEARS

You will develop a range of skills vital for management and administration roles. You will choose an occupational specialism from one of the following: Business Improvement, Business Support, or Team Leadership/Management.

Includes a minimum of 45 days working with an employer on an industry placement.



"The support I have received for the course is really good and I am enjoying the subjects. I have been on a few trips which have widened my experience of how businesses work and have opened up options for consideration for my future career."

JACK SOLEY
Level 3 Business

T LEVEL FOUNDATION YEAR **FINANCE, ACCOUNTING AND BUSINESS**

LEVEL 2	CAMPUS NORTH STAR	LENGTH 1 YEAR
------------	----------------------	------------------

You will develop a broad range of knowledge, skills, and behaviours around the following subject areas: applying research skills to a business content; interpreting business information to measure performance; applying communication skills to support customer/client needs.

Includes a minimum of 45 days working with an employer on an industry placement.

INTRODUCTORY DIPLOMA **VOCATIONAL STUDIES (ICT, BUSINESS AND ESPORTS)**

LEVEL 1	CAMPUS NORTH STAR	LENGTH 1 YEAR
------------	----------------------	------------------

In this new qualification, the focus is on the development of both transferable and sector skills which can be applied to Business, Esports and IT. You will be able to develop subject knowledge around business and how IT applications work. Along with exploring technical units such as networking to support Esport events.

APPRENTICESHIP **ASSISTANT ACCOUNTANT**

LEVEL 3	CAMPUS QUEENS DRIVE	LENGTH 18 MONTHS
------------	------------------------	---------------------

As part of this apprenticeship role, you will acquire essential knowledge of accounting principles and financial analysis. You will undertake the Accounting Level 3 Advanced Diploma (AAT) as well as on-programme assessment in areas such as problem solving, systems and processes, and recording and analysing financial data.

APPRENTICESHIP **BUSINESS AND ADMINISTRATION**

LEVEL 3	CAMPUS NORTH STAR	LENGTH 18 MONTHS
------------	----------------------	---------------------

As part of this exciting apprenticeship role, you will undertake the Diploma in Business Administration Level 3, as well as on-programme assessment on your technical knowledge and understanding. You will gain valuable skills and knowledge to support your career in the business sector.

APPRENTICESHIP **CUSTOMER SERVICE**

LEVEL 3	CAMPUS NORTH STAR	LENGTH 18 MONTHS
------------	----------------------	---------------------

In this role you are an advocate of customer service, acting as a referral point for dealing with more complex or technical customer requests, complaints, and queries. You will also be the escalation point for complicated or ongoing customer problems. You will gather and analyse data and customer information that can influence positive change and improvements in service. This role also requires an awareness and understanding of digital technology and IT systems.

APPRENTICESHIP **HR SUPPORT**

LEVEL 3	CAMPUS NORTH STAR	LENGTH 12 MONTHS
------------	----------------------	---------------------

This role provides the opportunity for those interested in HR to gain hands on experience in handling HR issues, working with HR processes and actively contributing to HR changes within the business. It is a chance to develop skills and knowledge for a further career in human resources.

APPRENTICESHIP

MULTI-CHANNEL MARKETER

LEVEL	CAMPUS	LENGTH
3	NORTH STAR	18 MONTHS

Multi-Channel Marketers will sit within a specific company/ agency that provides marketing deliverables and advice to external clients, or within an internal marketing team, delivering marketing activities to drive that business. You will develop the skills and knowledge needed to support customer focussed marketing activities that drive the demand for a product or service through awareness raising and/or perception building.

APPRENTICESHIP

TEAM LEADING/MANAGEMENT

LEVEL	CAMPUS	LENGTH
3	NORTH STAR	18 MONTHS

This apprenticeship provides training for capable staff, already working in other roles but who have the potential to take on future leadership and management positions. This means that when more senior roles become available, there are already suitable candidates ready for promotion. This allows organisations to save time and money on advertising vacancies, while also supporting in-house talent and progression.

APPRENTICESHIP

ACCOUNTS OR FINANCE ASSISTANT

LEVEL	CAMPUS	LENGTH
2	QUEENS DRIVE	12 MONTHS

As an Accounts and/or Finance Assistant you will be an integral part of the team responsible for maintaining an efficient and accurate finance function within a business. An internationally recognised qualification, AAT is the go-to route for those looking to start an accounting career. This qualification ensures you will be work ready for this vital and in-demand role.

APPRENTICESHIP

CUSTOMER SERVICE

LEVEL	CAMPUS	LENGTH
2	NORTH STAR	24 MONTHS

In the role as a Customer Service Assistant, you will gather and analyse data and customer information that can influence positive change and improvements in service. This role also requires an awareness and understanding of digital technology and IT systems. You may also support other more experienced members of the team on more complex customer requests, complaints, or queries.



SCAN HERE
TO LEARN MORE
bit.ly/3RhSCri

CHILDCARE, EARLY YEARS AND TEACHING

If you are someone who enjoys being around children, has a nurturing personality, and is eager to make a positive impact on their lives, this is the ideal path for you.

FUTURE CAREERS

- Nursery Worker
- Health Play Specialist
- Family Support Worker
- Nursery Manager
- Child Development Specialist
- Childminder
- Early Years Teacher

PROGRESS WITH US

	LEVEL 1	LEVEL 2	LEVEL 3	LEVEL 4+
VOCATIONAL	●	●	●	
APPRENTICESHIP		●	●	●
UNIVERSITY CENTRE				●

OVERVIEW



Careers in childcare and teaching are not only rewarding but also in high demand.



Explore various aspects of child development, education techniques, and the importance of creating a supportive and inclusive learning environment.



Learn how to work with children of different ages and understand their individual needs.



Taught by highly qualified lecturers with industry experience and strong links with nurseries and schools, allowing you to put theory into practice via work placements.



Access to fantastic facilities including a state-of-the-art nursery with a sensory room.



"I joined New College Swindon last year and realised I had a passion for childcare. The support from my lecturers in all aspects has been amazing and it's really made me love this course. "

LAURA HAMMOND

T Level Early Years
and Education



"I love learning at New College Swindon and have made so many new friends! I especially love the library, it has been super useful. I have never loved education more than I do now."

LOTTIE RODDY

T Level Early Years and Education

T LEVEL

EDUCATION AND CHILDCARE EARLY YEARS EDUCATOR

**LEVEL
3**

**CAMPUS
QUEENS DRIVE**

**LENGTH
2 YEARS**

If you are interested in working with children from birth to 19 years (or 25 under SEND), then this is the T Level for you. In the first year, you will develop a wide range of skills needed for the care and education of young children. Then in your second year, you will specialise in either Early Years Educator or Assistant Teaching. This is a practical course, with most of your learning taking place in our onsite nursery or IT suite.

T LEVEL FOUNDATION YEAR

EARLY YEARS

**LEVEL
2**

**CAMPUS
QUEENS DRIVE**

**LENGTH
1 YEAR**

Gain knowledge and understanding of babies and young children from birth to eleven years of age. You will study several units including: safeguarding, protection and welfare of babies and children in early years and primary settings; roles and responsibilities of the educational professional; nutrition, play and supporting children and young people's development.

INTRODUCTORY DIPLOMA

VOCATIONAL STUDIES (HEALTH AND SOCIAL CARE AND EARLY YEARS)

**LEVEL
1**

**CAMPUS
QUEENS DRIVE**

**LENGTH
1 YEAR**

This course is designed to help develop your skills for working with and caring for people. Course content includes: finding out about health and social care services; working with others; researching a topic; communication skills; advising others about healthy lifestyles.

APPRENTICESHIP

EARLY YEARS EDUCATOR

**LEVEL
3**

**CAMPUS
QUEENS DRIVE**

**LENGTH
18 MONTHS**

Early Years Educators are highly trained professionals who play a key role in ensuring that young children learn and develop well and are kept healthy and safe. This is a rewarding occupation, where you can work in various settings including full day care, children's centres, pre-schools, reception classes and as childminders.

APPRENTICESHIP

TEACHING ASSISTANT

**LEVEL
3**

**CAMPUS
QUEENS DRIVE**

**LENGTH
18 MONTHS**

This course will enable you to learn all the skills needed to support a class teacher in enhancing learners' progress and development within an education setting. You can work in a variety of different roles including as an assistant teacher; learning support worker; teaching assistant and learning support assistant.

APPRENTICESHIP

EARLY YEARS PRACTITIONER

**LEVEL
2**

**CAMPUS
QUEENS DRIVE**

**LENGTH
18 MONTHS**

An Early Years Practitioner is responsible for supporting the delivery of activities, purposeful play opportunities and educational programmes within an early years setting. As part of this course you can work in a variety of different roles such as an Assistant childminder; Early years practitioner, nursery assistant and nursery practitioner.





**SCAN HERE
TO LEARN MORE**
bit.ly/49QejR



COURSE TAKES PLACE AT SAWIOT
WHERE YOU SEE THIS LOGO
www.sawiot.ac.uk

COMPUTING AND I.T.

If you are curious, analytical, enjoy problem-solving and keeping up with the latest innovations in technology, then we have the perfect range of courses for you.

FUTURE CAREERS

- Software Developer
- Systems Analyst
- Network Engineer
- Web or Mobile App Developer
- Cyber Technologist
- Esports
- Data Analyst
- IT Support Technician
- IT Project Manager

PROGRESS WITH US

	LEVEL 1	LEVEL 2	LEVEL 3	LEVEL 4+
VOCATIONAL	●	●	●	
APPRENTICESHIP			●	●
SAWIoT				●

OVERVIEW



We are living in a digital age and whether it's developing apps, securing online spaces, or making sure information flows seamlessly, the demand for skilled professionals in computing and IT is skyrocketing.



Taught by highly qualified lecturers with unique skill sets and industry experience.



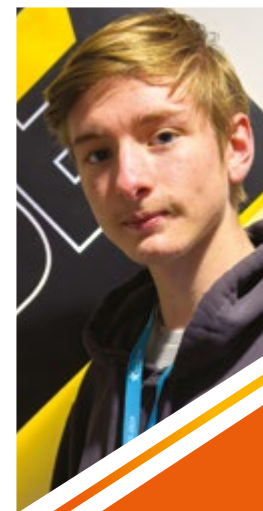
Access to fully equipped computer labs and cyber suites with state-of-the-art software including our latest addition of an Esports lab.



Opportunities to engage with employers, undertake work experience and go on trips.



You could even join our North Star Esports team who have competed in national championships and even visited 10 Downing Street!



"I am studying Level 3 BTEC Esports, I have enjoyed the course and learning more about the industry. This course has impacted me in a very positive way as I have met great people who have the same interests as me."

JOSH JONES
Level 3 BTEC Esports



"I have liked the variety within our assignments and have received amazing support from my lecturers."

EVAN PALMER
Extended Diploma
in Esports



T LEVEL DIGITAL SUPPORT SERVICES

LEVEL
3

CAMPUS
NORTH STAR

LENGTH
2 YEARS

On this course you will develop your knowledge in a range of areas including digital environments, business contexts, the use of data and the different platforms of delivery in the digital industry. You will also learn how digital skills are fundamental to businesses, exploring careers within the digital support services sector, fault analysis and problem resolution.

Includes a minimum of 45 days working with an employer on an industry placement.



T LEVEL DIGITAL PRODUCTION DESIGN AND DEVELOPMENT

LEVEL
3

CAMPUS
NORTH STAR

LENGTH
2 YEARS

This course can open a world of opportunities such as working as a web or software Developer, tester or project manager. This programme covers many interesting areas including: computational thinking; programming; legislation and regulatory requirements; understanding business environments; creation and use of data (including AI); digital environments and security.

Includes a minimum of 45 days working with an employer on an industry placement.



EXTENDED DIPLOMA ESPORTS

LEVEL
3

CAMPUS
NORTH STAR

LENGTH
2 YEARS

If you have a strong interest in Esports and are keen to enter the fast-growing Esports industry, then this is the course for you! It will provide you with the knowledge and practical skills you need to compete healthily in tournaments, as well as running and setting them up. You will also learn about the marketing, legal and sport science aspects of the competitive gaming industry.

DIPLOMA ESPORTS

LEVEL
2

CAMPUS
NORTH STAR

LENGTH
1 YEAR

By studying this course you will learn about modern business, sports enterprise and creative design within the rapidly growing esports industry. It will provide you with the knowledge and practical skills you need to plan an Esports event, design an Esports game, compete healthily in tournaments and how to practice positive health and wellbeing in Esports.

T LEVEL FOUNDATION PROGRAMME INFORMATION TECHNOLOGY

LEVEL
2

CAMPUS
NORTH STAR

LENGTH
1 YEAR

This course will enable you to develop your practical IT skills whilst also learning about the most up to date IT theory and industry trends. The course covers modules including essentials of IT, essentials of Cyber Security, using social media for business and using data analysis software.

INTRODUCTORY DIPLOMA

VOCATIONAL STUDIES (ICT, BUSINESS AND ESPORTS)LEVEL
1CAMPUS
NORTH STARLENGTH
1 YEAR

In this new qualification, the focus is on the development of both transferable and sector skills which can be applied to Business, Esports and IT. You will be able to develop subject knowledge around business and how IT applications work. Along with exploring technical units such as networking to support Esport events.



APPRENTICESHIP

**INFORMATION
COMMUNICATIONS TECHNICIAN**LEVEL
3CAMPUS
NORTH STARLENGTH
18 MONTHS

Organisations are increasingly relying on computer and communications systems in all areas of their operations and decision-making processes. This apprenticeship is ideal if you are looking for a career in the operation of IT and/or telecommunications systems, including hardware and software.



APPRENTICESHIP

**IT SOLUTIONS
PROFESSIONAL/TECHNICIAN**LEVEL
3CAMPUS
NORTH STARLENGTH
18 MONTHS

An IT solutions professional provides technical support to internal and external customers. You will help them to be productive when using technology to do their jobs, by using tools to problem solve and troubleshoot non-routine problems.





SCAN HERE
TO LEARN MORE
bit.ly/3RfBhbl

CONSTRUCTION TRADES

If you're a hands-on problem-solver with a passion for building and working with tools, these practical courses are a great fit for you.

FUTURE CAREERS

- Bricklayer
- Plumber
- Business Owner
- Carpenter
- Site Manager

PROGRESS WITH US

	LEVEL 1	LEVEL 2	LEVEL 3	LEVEL 4+
VOCATIONAL	●	●	●	
APPRENTICESHIP		●	●	
UNIVERSITY CENTRE				●

OVERVIEW



The construction industry is booming, and skilled tradespeople are in high demand. You will be setting yourself up for success in an area that not only offers financial stability but also allows you to see the direct impact of your work on the world around you.



Imagine being part of a team that transforms architectural plans into reality or troubleshooting and fixing crucial systems that keep buildings running smoothly.



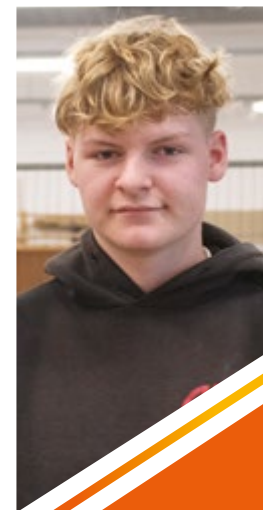
Lecturers with extensive industry experience and employer contacts.



Opportunities to visit trade shows/ exhibitions and work on real sites.



Former students have competed and won at the regional and national level in competitions such as SkillBuild UK National Final and World Skills.



"My experience as an apprentice at New College Swindon has given me the opportunity to work in the industry I enjoy. Since being here I have also represented the College at a National competition."

HARRY WATSON

Level 2 Apprenticeship
in Bricklaying



"I chose New College as the course looked really interesting. I came to an Open Event and liked the look of the modern facilities and equipment."

FINLEY MOORE

Finley (Royal Wootton Bassett Academy) completed the Diploma in Plumbing Studies at Level 2 and is now undertaking an apprenticeship in Plumbing and Domestic Heating Technician at Level 3.

DIPLOMA BRICKLAYING (CONSTRUCTION)

LEVEL
2

CAMPUS
NORTH STAR

LENGTH
1 YEAR

If you are looking for a varied, outdoor job, have an interest in construction and lots of energy, then this is a great choice of career! The course is delivered through demonstrations, practical workshops, theory, assignments and project work. You will develop a wide range of practical skills, both at college and on building sites in real working conditions.

DIPLOMA BRICKLAYING (CONSTRUCTION)

LEVEL
1

CAMPUS
NORTH STAR

LENGTH
1 YEAR

This course introduces you to the key practical skills and knowledge required to become a bricklayer. You will study a wide range of topics including: health, safety and welfare in construction; technical information; construction technology; block, brick and cavity walling; setting out for basic masonry structures; the mixing of construction materials.

DIPLOMA PLASTERING

LEVEL
1

CAMPUS
NORTH STAR

LENGTH
1 YEAR

This hands-on course will enable you to learn the basic skills for a career as a plasterer. You will learn how to prepare walls, how to mix and prepare plastering materials, precision cutting of plasterboard and plastering application.

DIPLOMA BENCH JOINERY

LEVEL
2

CAMPUS
NORTH STAR

LENGTH
1 YEAR

You will learn how to: set up and operate a circular saw; produce setting out details for bench joinery products; mark out from setting out details for bench joinery products; manufacture bench joinery products.

DIPLOMA SITE CARPENTRY (CONSTRUCTION)

LEVEL
2

CAMPUS
NORTH STAR

LENGTH
1 YEAR

You will learn how to: carry out first fix flooring and roofing; carry out first fix frames, partitions and stairs; carry out second fixing operations; carry out carpentry maintenance; set up and operate a circular saw.

DIPLOMA CARPENTRY AND JOINERY (CONSTRUCTION)

LEVEL
1

CAMPUS
NORTH STAR

LENGTH
1 YEAR

This course introduces you to the practical skills and knowledge needed to become a carpenter and will prepare you for further training in the industry. You will learn about all aspects of the trade, including: health, safety and welfare; technical information; communication; understanding more about construction technology.

EXTENDED CERTIFICATE CARPENTRY AND JOINERY (CONSTRUCTION)

LEVEL
1

CAMPUS
NORTH STAR

LENGTH
1 YEAR

This practical course will introduce you to a range of construction industry skills. You will gain knowledge that will help you to decide whether construction is the industry for you. It covers a variety of construction trades, including: bricklaying, carpentry and joinery, plastering, painting and decorating, and tiling.

DIPLOMA BUILDING SERVICES

LEVEL
1

CAMPUS
NORTH STAR

LENGTH
1 YEAR

This practical course will introduce you to a range of building services skills. You will gain knowledge that will help you to decide whether building services is the industry for you. It covers a variety of trades, including electrical and plumbing.

ADVANCED TECHNICAL DIPLOMA PLUMBING

LEVEL
3

CAMPUS
NORTH STAR

LENGTH
2 YEARS

This course will help you to become a qualified plumber in the building services industry. You will develop an understanding of the plumbing sector, as well as the specific skills needed. Core units include: working safely and effectively; environmental technology systems; planning and design of cold and hot water systems; domestic central heating systems.





"The course structure is great. You can work at your own pace, advancing more quickly if you want to. The teachers have a good rapport with the students."

KELLIE WEBB

Carpentry and Joinery apprenticeship at Level 3.

TECHNICAL CERTIFICATE **PLUMBING STUDIES (CONSTRUCTION)**

LEVEL 2	CAMPUS NORTH STAR	LENGTH 1 YEAR
------------	----------------------	------------------

The content of the course is varied, covering the key knowledge needed in the plumbing sector. Units include: health and safety; electrical principles and processes; common plumbing processes; hot and cold water Systems; sanitation; central heating; drainage systems; communication.

DIPLOMA **PLUMBING STUDIES**

LEVEL 1	CAMPUS NORTH STAR	LENGTH 1 YEAR
------------	----------------------	------------------

This course introduces you to the many practical skills and knowledge you will need to become a plumber including: safe working practice; environment and sustainability; the construction industry; drainage; copper, plastic and steel pipework; plumbing systems and plumbing science.

APPRENTICESHIP **BRICKLAYER**

LEVEL 2	CAMPUS NORTH STAR	LENGTH 24 MONTHS
------------	----------------------	---------------------

This apprenticeship will give you a start in your career within the construction industry, specialising in brickwork. You will learn how to lay bricks, blocks and different types of mortar to construct and repair walls, partitions, arches and other structures. You will be taught about general workplace safety; efficient work practice; moving and handling resources; erecting and dismantling work platforms; placing and finishing of concrete.

APPRENTICESHIP **CARPENTRY**

LEVEL 3	CAMPUS NORTH STAR	LENGTH 15 MONTHS
------------	----------------------	---------------------

If you are working within the construction industry or enhance your carpentry skills, this apprenticeship is for you. You will learn more complex techniques within site carpentry. Advanced Site Carpenters work on building sites in the construction of domestic and commercial properties, preparing and installing complex and bespoke building components such as roof structures.

APPRENTICESHIP **CARPENTRY AND JOINERY**

LEVEL 2	CAMPUS NORTH STAR	LENGTH 24 MONTHS
------------	----------------------	---------------------

There are two pathway options: a Site Carpenter, normally based on a building site or in domestic/commercial premises carrying out fixing and building, installation of fittings, repair and maintenance; or a Bench Joiner, employed in a workshop producing timber-based building components.

APPRENTICESHIP **INTERIOR SYSTEMS INSTALLER**

LEVEL 2	CAMPUS NORTH STAR	LENGTH 24 MONTHS
------------	----------------------	---------------------

This specialist job is found in the construction industry including new-build, renovation and refurbishment. It involves the installation, repair and maintenance to elements of a building's internal structure. Primarily the construction of partitions, walls and ceilings. Professionals in this sector work on diverse projects, from hotels, schools and airports to football stadiums and military bases. It's a fast-growing industry with many opportunities for exciting careers.

APPRENTICESHIP PLASTERER

LEVEL
2

CAMPUS
NORTH STAR

LENGTH
30 MONTHS

Plastering is a core function within the construction sector, particularly the house building sector and refurbishment sectors. The broad purpose of this job is to apply layers of plaster onto walls, floors and ceilings. In this apprenticeship, you will specialise in either solid or fibrous plaster work after undertaking the core learning, which includes introductory elements in both these areas.

APPRENTICESHIP PLUMBING AND DOMESTIC HEATING TECHNICIAN

LEVEL
3

CAMPUS
NORTH STAR

LENGTH
48 MONTHS

On this apprenticeship you will train to become as a fully qualified Gas Engineer. You will learn how to plan, install, service, commission and maintain all aspects of plumbing and heating systems, both inside and outside of properties. In addition, you will undertake CCN1, CENWAT and MET qualifications.

APPRENTICESHIP PROPERTY MAINTENANCE OPERATIVE

LEVEL
2

CAMPUS
NORTH STAR

LENGTH
18 MONTHS

This apprenticeship will set you up to work, train and develop a career in property maintenance. You will learn about supporting the general maintenance of the property, to ensure it is in a safe and high quality condition. Course content includes: maintenance of plumbing, plant, safety systems, equipment, water hygiene and carrying out general repairs.





**SCAN HERE
TO LEARN MORE**
bit.ly/3N2WHq9

ELECTRICAL INSTALLATION

If you enjoy figuring out how things work, solving complex problems in a methodical manner and have a keen interest in technology, then an electrical installation course could be the perfect fit for you.

FUTURE CAREERS

- Electrician
- Security Installer
- Domestic Appliance Services Engineer
- Building Services Engineer
- Renewable Energy Technician
- Electrical Inspector
- Electric Vehicle (EV) Charging Station Installer

PROGRESS WITH US

	LEVEL 1	LEVEL 2	LEVEL 3	LEVEL 4+
VOCATIONAL		•	•	
APPRENTICESHIP			•	
UNIVERSITY CENTRE				

OVERVIEW



Our world relies on electricity for just about everything. From the lights in your room to the gadgets you can't live without, electricians are the ones making sure our homes and businesses stay powered up and run smoothly.



Once you've mastered the art of electrical installations, doors open to a variety of exciting fields. Picture yourself working in construction, maintaining power grids or even venturing into renewable energy.



Lecturers with extensive industry experience and employer contacts.



Opportunities for you to gain practical work experience and work on a wide range of projects.



DIPLOMA ELECTRICAL INSTALLATION (BUILDING AND STRUCTURES) *FAST TRACK*

LEVEL
2

CAMPUS
NORTH STAR

LENGTH
1 YEAR

This qualification is designed to provide you with the basic skills and experience you need to progress into a career in the electrical or electro-technology industry. You will develop both practical and knowledge-based skills across a number of areas including: health and safety, electrical science, electrical installations and wiring systems.

APPRENTICESHIP INSTALLATION AND MAINTENANCE ELECTRICIAN

LEVEL
3

CAMPUS
NORTH STAR

LENGTH
42 MONTHS

This apprenticeship is for people who are looking to train as an Installation Electrician. You will learn how to install electrical systems in industrial, commercial and domestic settings. You will develop the knowledge, skills and behaviours required to achieve the Level 3 Electrotechnical Installation Qualification, leading to a successful career in this industry.

"I'm really enjoying my course; I'm learning all kinds of new skills which will benefit me in the future."

BAILEY LEGG
Level 3 Electrical
Installations





**SCAN HERE
TO LEARN MORE**
bit.ly/3RgQDgb



COURSE TAKES PLACE AT SAWIOT
WHERE YOU SEE THIS LOGO
www.sawiot.ac.uk

ENGINEERING

Do you enjoy figuring out how things work, taking things apart and putting them back together again? Are you an innovator who likes to find creative solutions to a problem? Then you would make a great engineer.

FUTURE CAREERS

- Mechanical Engineer
- Electrical Engineer
- Renewable Energy Engineer
- Civil Engineer
- Robotics Engineer

PROGRESS WITH US

	LEVEL 1	LEVEL 2	LEVEL 3	LEVEL 4+
VOCATIONAL		•	•	
APPRENTICESHIP			•	•
SAWIOT				•

OVERVIEW



Engineering is incredibly diverse and covers a wide range of disciplines including: civil, mechanical, electrical, aerospace, biomedical and more.



Engineers play a crucial role in shaping the world we live in by finding solutions to complex challenges, improving existing systems and creating new innovations that help to make our lives and our environment better.



Study in the Swindon and Wiltshire Institute of Technology, a multi-million-pound facility dedicated to higher technical training.



Gain practical experience on cutting-edge equipment and technology that is used by industry-leading employers and unmatched by any other education provider in the region.



Lecturers with extensive industry experience and degrees or postgraduate qualifications.



Close links with local employers and students have undertaken work experience with companies such as Network Rail, Patheon, CH2M and Retrac.





*"I love Engineering.
It's given me so
much satisfaction
and opened
the door to new
experiences where I
can put my practical
skills to good use."*

BRADLEY PIGNATELLI
Level 2 Engineering



T LEVEL **DESIGN AND DEVELOPMENT FOR ENGINEERING AND MANUFACTURING**

LEVEL
3

CAMPUS
NORTH STAR

LENGTH
2 YEARS

Design Engineers utilise cutting edge technologies and innovative solutions to develop products from prototype to reality using engineering skills in fields such as robotics, smartphones, sustainable energy and defence systems. You will study specialist units including: skills in producing mechanical drawings and representations; skills in designing and developing working models; skills in testing models and prototypes.

Includes a minimum of 45 days working with an employer on an industry placement.



T LEVEL **ENGINEERING, MANUFACTURING, PROCESSING AND CONTROL**

LEVEL
3

CAMPUS
NORTH STAR

LENGTH
2 YEARS

You will develop an understanding of a broad range of issues relevant to the sector, including: how materials, conditions and context influence design processes and products; essential mathematics for engineering and manufacturing; materials and their properties; business, commercial and financial awareness.

Includes a minimum of 45 days working with an employer on an industry placement.



T LEVEL **DESIGN, SURVEYING AND PLANNING FOR CONSTRUCTION**

LEVEL
3

CAMPUS
NORTH STAR

LENGTH
2 YEARS

This course is ideal if you have an interest in Construction management and want to focus on design and surveying or civil engineering. You will gain the core knowledge required for the construction sector including: science and building technology; construction industry and sustainability; surveying and design for construction and the built environment; civil engineering; building services design; design and management of construction projects.

DIPLOMA **ENGINEERING TECHNOLOGY (ENGINEERING)**

LEVEL
2

CAMPUS
NORTH STAR

LENGTH
1 YEAR

You will gain a comprehensive understanding of engineering practices and processes. Mandatory units include the understanding of engineering and health and safety. You will then have a choice of topics to study, including: mechanical engineering technology; maintenance engineering technology; welding technology or electrical and electronics technology.

Includes a minimum of 45 days working with an employer on an industry placement.



APPRENTICESHIP CIVIL ENGINEERING TECHNICIAN

LEVEL
3

CAMPUS
NORTH STAR

LENGTH
36 MONTHS

This role involves providing technical support to engineers and other construction professionals in a number of areas including: design, development, construction, commissioning, decommissioning, operation or maintenance of the built environment and infrastructure. You will learn key skills, knowledge and behaviours around design, analysis, project delivery and site engineering.



APPRENTICESHIP ENGINEERING TECHNICIAN

LEVEL
3

CAMPUS
NORTH STAR

LENGTH
42 MONTHS

We offer three pathways: Mechatronics Maintenance Technician, Toolmaker and Tool and Die Maintenance Technician, Technical Support Technician. You will achieve the following qualifications as part of your programme: Level 2 Foundation Competence Qualification; Level 3 Development Technical Competence Qualification; Level 3 Development Technical Knowledge Qualification.



APPRENTICESHIP MACHINING TECHNICIAN

LEVEL
3

CAMPUS
NORTH STAR

LENGTH
42 MONTHS

Machining technicians produce complex and precision machined products that are typically used in machinery. For example, aeroplanes and vehicles. They can also produce bespoke components or products for domestic appliances or medical equipment. Two pathways are available; Machining and Maintenance and Maintenance Engineering, including mechanical and electrical maintenance tasks, interpreting documents and drawings. Machining will include using CNC machine tools such as centre lathes, vertical and horizontal milling machines, horizontal and cylindrical grinding machines.





SCAN HERE
TO LEARN MORE
bit.ly/3uzfQtz

HAIR AND BEAUTY

These courses could be ideal if you are someone who loves experimenting with hairstyles, make-up, and helping people to look and feel their absolute best.

FUTURE CAREERS

- Hair Stylist
- Beauty Therapist
- Salon Manager
- Freelance Make-Up Artist
- Nail Technician
- Cosmetologist

PROGRESS WITH US

	LEVEL 1	LEVEL 2	LEVEL 3	LEVEL 4+
VOCATIONAL	●	●	●	
APPRENTICESHIP				
SAWIoT				●

OVERVIEW



A range of specialised skills is needed for this sector, but once qualified, there are opportunities to work all over the world and in good careers, from trainees to managers and future business owners.



Taught by fully qualified lecturers who have run businesses or worked for well-known salons/ companies.



Facilities are great; training clinics are industry-standard and we have a commercial salon, with the latest tools, resources and equipment.



Opportunities to work on paying clients in our commercial salon; take part in end-of-year shows and fundraising events.



Opportunities to enter national competitions and visit manufacturers, trade shows and exhibitions.



Green Salon Initiative kitemark, recognising our team's effort to collect and recycle salon waste that normally goes into landfill.



"I started at the college as a nervous student who didn't have much drive. I now work as the hair and beauty technician at the college and I'm working towards getting a job in teaching."

MACKENZIE COOK

Studied Level 1, 2, 3
and 4 Hairdressing



"The guidance my teachers give me really helps. I feel like I can open up to them about anything whether it's something positive or negative, it's like having a life mentor who wants you to excel in life."

JAMELIA DOYLE
Level 3 Beauty

DIPLOMA MASSAGE THERAPY

LEVEL 3	CAMPUS NORTH STAR	LENGTH 1 YEAR
------------	----------------------	------------------

This course prepares you to provide massage treatments and understand relevant anatomy and physiology, health and safety, the history and origins of massage therapies and how to contribute to the running of a business. You will also develop the knowledge, understanding and skills to consult with clients, promote retail products, and provide a variety of massage therapies.

DIPLOMA WOMEN'S HAIRDRESSING

LEVEL 3	CAMPUS NORTH STAR	LENGTH 1 YEAR
------------	----------------------	------------------

This course prepares you for a career as a senior hairdresser/stylist. Specialist units include: hair colour correction; bridal hairstyling; marketing for the hair and beauty sector; hair extensions; in-depth colour knowledge. This course gives you the opportunity to become confident within the industry and build up your clientele with the support of a hairdressing assessor.

DIPLOMA BARBERING STUDIES

LEVEL 2	CAMPUS NORTH STAR	LENGTH 1 YEAR
------------	----------------------	------------------

During this course you will cover all the areas required in the industry, including: health and safety; client consultation; shampoo and conditioning hair; cutting hair; cutting facial hair; promoting products and services to clients in a salon. You will develop your knowledge, understanding and skills to enable you to advise and consult with clients. This includes the type of haircut and facial hair shaping the way they want, but just as importantly, what is suitable for them.

DIPLOMA BEAUTY THERAPY

LEVEL 2	CAMPUS NORTH STAR	LENGTH 1 YEAR
------------	----------------------	------------------

This course has all the elements for you to work as a Beauty Therapist including: manicure and pedicure treatments; waxing services; facial and skin type analysis; eyebrow shaping services; eyelash and eyebrow tinting services; make-up applications; health and safety; anatomy and physiology.

DIPLOMA WOMEN'S HAIRDRESSING

LEVEL 2	CAMPUS NORTH STAR	LENGTH 1 YEAR
------------	----------------------	------------------

This course enables you to provide and learn about shampooing, conditioning and treating the hair and scalp, the art of dressing and colouring hair, client consultation, cutting women's hair, and colouring and lightening hair. To further enhance your skills, you will also cover artistic and creative elements such as creating a hair and beauty image based on a theme.

DIPLOMA HAIRDRESSING

LEVEL 1	CAMPUS NORTH STAR	LENGTH 1 YEAR
------------	----------------------	------------------

An introduction to hairdressing and the skills needed for a career in the industry. You will learn in a realistic working environment and gain an understanding of a range of skills and techniques including: women and men's styling, plaiting and twisting hair, dressing hair, shampoo and conditioning and using colour. To enhance your skills further, there are additional artistic and creative elements of the course, such as a challenge to create a hair and beauty image.

DIPLOMA
INTRODUCTION TO THE BEAUTY SECTOR

LEVEL
1

CAMPUS
NORTH STAR

LENGTH
1 YEAR

You will develop your practical skills through the following units: improving the appearance of the hands and feet with basic manicure and pedicure services; providing relaxing head massage treatments; cleansing; toning and moisturising and giving advice on skin care; basic day make-up application. You will also cover artistic and creative elements on your course such as nail art, themed face painting and photographic make-up.





SCAN HERE
TO LEARN MORE
bit.ly/49LiIDA

HEALTH AND SOCIAL CARE

If you're a compassionate and empathetic individual who finds joy in helping others then you're the type of person who will thrive on one of our health and social care courses.

FUTURE CAREERS

- Health Visitor
- Healthcare Assistant
- Nurse
- Midwife
- Community Outreach Officer
- Care Manager

PROGRESS WITH US

	LEVEL 1	LEVEL 2	LEVEL 3	LEVEL 4+
VOCATIONAL	•	•	•	•
APPRENTICESHIP		•	•	•
UNIVERSITY CENTRE				•

OVERVIEW



These courses are designed for those who want to play a vital role in healthcare and social services, whether it's in hospitals, community centres, care facilities or peoples' homes.



Better training facilities than most hospitals and healthcare settings, including a mock hospital with wards and birthing suite.



Home of SWITCH, the Swindon and Wiltshire Innovative Technology Care Hub, where you can use immersive technologies such as augmented reality and virtual reality to 'learn by doing' rather than by simply watching.



Lecturers with degree-level qualifications and a lot of industry experience, some still working in local settings.





"I enjoyed the in-depth knowledge I have gained from my course regarding healthcare and the support that was available to me. I have been lucky enough to complete placement practicing as a HCA at the great western hospital which has aided me in gaining core and transferable skills and experiences."

JESSICA MURRAY
T Level Health



"Being on my work placement has allowed me to see how many things we take for granted. I plan on becoming an emergency care assistant with South Western Ambulance Service."

REUBEN MILES

T Level Health Care

T LEVEL HEALTH

LEVEL 3	CAMPUS QUEENS DRIVE	LENGTH 2 YEARS
------------	------------------------	-------------------

You will learn about patient care while gaining practical experience through industry placements. Gain a better understanding of our healthcare systems, engage with cutting-edge technologies and develop the empathy and communication skills crucial for effective patient interaction. In year two you will choose an occupational specialism of either Adult Nursing, Midwifery or Mental Health.

Includes a minimum of 45 days working with an employer on an industry placement.

FOUNDATION DIPLOMA HEALTH AND SOCIAL CARE

LEVEL 3	CAMPUS QUEENS DRIVE	LENGTH 2 YEARS
------------	------------------------	-------------------

Learn more about the caring community, including various groups and organisations working with children and young individuals, those who have a disability, vulnerable adults and older people with a range of needs, in a variety of different settings. You will study units such as: work experience in health and social care; understanding mental wellbeing; health promotion and sociological perspectives.

T LEVEL FOUNDATION PROGRAMME HEALTH

LEVEL 2	CAMPUS QUEENS DRIVE	LENGTH 1 YEAR
------------	------------------------	------------------

This course provides you with an introduction to the skills required to work in the healthcare sector. You will study units including: biology; human lifespan development; dignity and safeguarding vulnerable adults. You will gain the knowledge, skills, and work experience needed for progression on to the T Level.

EXTENDED CERTIFICATE HEALTH AND SOCIAL CARE

LEVEL 2	CAMPUS QUEENS DRIVE	LENGTH 1 YEAR
------------	------------------------	------------------

Learn about the caring community, including working with individuals with identified needs and older adults. You will study units including: effective communication; human lifespan development; health and social care values; creative and therapeutic activities; first Aid; food safety; promoting health and wellbeing; equality and diversity; services in health and social care and infection control.

INTRODUCTORY DIPLOMA VOCATIONAL STUDIES (HEALTH AND SOCIAL CARE AND EARLY YEARS)

LEVEL 2	CAMPUS QUEENS DRIVE	LENGTH 1 YEAR
------------	------------------------	------------------

An introduction into working within health, social care or early years. A taster course to help you decide your next steps.

APPRENTICESHIP

LEAD ADULT CARE WORKER

LEVEL

3

CAMPUS

QUEENS DRIVE

LENGTH

18 MONTHS

This is a rewarding job where you will make a positive difference to people's lives when they are faced with physical, practical, social, emotional or intellectual challenges. As a Lead Adult Care Worker, you may work in residential or nursing homes, domiciliary care, day centres or some clinical healthcare settings.

APPRENTICESHIP

ADULT CARE WORKER

LEVEL

2

CAMPUS

QUEENS DRIVE

LENGTH

12 MONTHS

Adult Care Workers are the frontline staff who help adults with care and support needs. As a care worker, you will help people achieve their personal goals and live as independently and safely as possible, enabling them to have control and choice in their lives. This apprenticeship will provide you with a Level 2 Diploma in Care.





SCAN HERE
TO LEARN MORE
bit.ly/40V7k3X

HOSPITALITY AND CATERING

Whether you dream of becoming a chef in a high-end restaurant, managing a bustling hotel kitchen, starting your own catering business or just love experimenting in the kitchen, these courses are perfect for you.

"It's a really amazing opportunity to do the Commis Chef apprenticeship. I went for it and it was the best decision I ever made. I get to travel to different places and get hands on experience in the workplace. I learn something new every day."

KATE RIGBY

Kate (Kingsbury Green Academy) is undertaking a Commis Chef Apprenticeship at Level 2.

FUTURE CAREERS

- Chef
- Restaurant manager
- Catering manager
- Restaurant or catering business owner

PROGRESS WITH US

	LEVEL 1	LEVEL 2	LEVEL 3	LEVEL 4+
VOCATIONAL	●	●	●	
APPRENTICESHIP		●	●	
UNIVERSITY CENTRE				

OVERVIEW



Develop your understanding of a wide range of culinary skills, from basic cooking techniques to advanced gastronomy.



It's not totally about cooking though, you will explore food safety, nutrition, and even the business side of the industry.



Serve paying customers at our training restaurant and Lyra Café.



Work experience is a huge part of this course and you will take part in themed food events and restaurant challenges and have access to industry speakers and masterclasses from Head Chefs.





"I have always wanted to be a chef. I have gained so many skills since being at the College it has given me the opportunity to try new things and learn at a top level. The thrill I get from cooking is like no other."

KIERAN SAUNDERS

Advanced Professional
Cookery Level 3

ADVANCED DIPLOMA PROFESSIONAL COOKERY

LEVEL
3

CAMPUS
NORTH STAR

LENGTH
1 YEAR

Gain practical skills that could see you working in areas like restaurants, hotels, cruise ships, the armed forces, or at music events. Learn cooking techniques for meat, fish, poultry, vegetables, pastry and desserts. On completion, progress to the hospitality industry as a Junior Chef, Chef de Partie, Sous Chef, Pastry Chef or Head Chef.

DIPLOMA INTRODUCTION TO PROFESSIONAL COOKERY

LEVEL
2

CAMPUS
NORTH STAR

LENGTH
1 YEAR

For those who want to become to become a Professional Chef. Work in our professional kitchens alongside fully qualified Chefs/Lecturers who will support you whilst you prepare and cook a variety of local and international dishes.

DIPLOMA INTRODUCTION TO PROFESSIONAL COOKERY

LEVEL
1

CAMPUS
NORTH STAR

LENGTH
1 YEAR

This course is for you if you work, or want to work as a professional chef. You will develop an understanding of the industry, while building your interest and passion for the hospitality and catering sector. Units include: food safety, health foods and special diets, working with fresh and pre-prepared ingredients and cold food preparation.

APPRENTICESHIP CHEF DE PARTIE

LEVEL
3

CAMPUS
NORTH STAR

LENGTH
18 MONTHS

This job is found across a range of sectors including hospitality, aviation and care. The broad purpose is to prepare, cook and finish complex dishes while overseeing a section of the kitchen; which could be the pastry, larder, butchery, fish, sauce or vegetable section of the kitchen. A chef de partie will oversee and supervise team members with receiving, storing, preparing, cooking and finishing of a range of food items.

APPRENTICESHIP COMMIS CHEF

LEVEL
2

CAMPUS
NORTH STAR

LENGTH
12 MONTHS

For you if you are seeking to train as a Chef. Working in a professional kitchen, you will learn how to carry out basic functions in all areas. You'll cover areas such as culinary skills, producing dishes and menu items, meat preparation, reviewing and refreshing menus, basic costing including profit and loss, food safety, liaison with people and relevant business skills.





SCAN HERE
TO LEARN MORE
bit.ly/40SOrid

MEDIA AND DIGITAL

Imagine a place where you can turn your wildest creative ideas into reality, whether it's crafting compelling stories, producing jaw-dropping visuals, or getting hands-on with the latest tech tools. That's what these courses are all about.

FUTURE CAREERS

- Director
- Producer
- Editor
- Animator
- Sound technician
- Stage manager
- Cinematographer
- Visual effects artist
- Games designer

PROGRESS WITH US

	LEVEL 1	LEVEL 2	LEVEL 3	LEVEL 4+
VOCATIONAL	●	●	●	
APPRENTICESHIP				
SAWIoT				●

OVERVIEW



From film and television production to digital marketing and game design, these courses open doors to so many different exciting career paths.



Taught by experienced lecturers who have experience in the industry and have had their own work shown on screen.



We work with employers, including Sandstorm Films, who have donated camera equipment and will provide unique on-set experience for students.



Access to professional filmmaking equipment including: a custom-built film studio featuring two infinity coves, green and white screens, a range of editing software, professional cinema cameras, microphones, audio recorders, LED lighting, Tracks, cranes, sliders, and gimbals.



Students take part in national and international competitions to win prizes, gain recognition and showcase work to top industry professionals.



"I enjoy making films and learning editing techniques. I receive consistent support from my lecturers during every project, plus I also receive peer reviews from my classmates which I find beneficial."

**LAWRENCE
GOLDSMITH**

Film and TV Level 3 BTEC



"The teachers and the course encourage creative freedom. The studio space is great it allows us to produce professional feeling projects."

MAX JENNER

Level 3 Media Production

EXTENDED DIPLOMA **CREATIVE MEDIA PRACTICE (FILM AND TV PRODUCTION)**

LEVEL
3

CAMPUS
NORTH STAR

LENGTH
2 YEARS

Learn about the industry and how media products are created and used by consumers. Apply that knowledge to your own productions and case studies; developing the planning, production, and editing skills needed for an exciting career. Projects may include: advertising production, scriptwriting, music video production, film editing, visual effects and pre-production processes.

EXTENDED DIPLOMA **CREATIVE MEDIA PRACTICE (GAMES DESIGN)**

LEVEL
3

CAMPUS
NORTH STAR

LENGTH
2 YEARS

Learn the fundamentals of 2D and 3D animation, concept art for character and environmental creation. You will gain knowledge and understanding of the theory of games, how to produce game design documents and create meaning through lighting and sound design. Through further practical workshop sessions and GameJams, you will learn the tools to create and build your worlds in 3D for VR, consoles, PC and mobile.

DIPLOMA **CREATIVE MEDIA SKILLS**

LEVEL
2

CAMPUS
NORTH STAR

LENGTH
1 YEAR

Gain the practical skills needed to progress into the three cornerstones of the media industry across the world, in areas such as film and TV, animation and games design. Although we focus on those specific areas, many of the skills you learn on this course are transferrable to other areas of the creative industries. You will have the opportunity to develop your production skills and then apply your knowledge to a live brief.

DIPLOMA **CREATIVE MEDIA STUDIES**

LEVEL
1

CAMPUS
NORTH STAR

LENGTH
1 YEAR

This course will give you an introduction to creative media, equipping you with basic creative skills in areas such as video editing and animation. After building a strong foundation of media skills, you will learn about the media industry and develop employability skills such as working independently, teamwork and working to deadlines.





**SCAN HERE
TO LEARN MORE**
bit.ly/3QUluwA

MEDIA MAKE-UP

If you love experimenting with colours, textures, and creating jaw-dropping looks, a media make-up course is your opportunity to unleash your artistic flair.

FUTURE CAREERS

- Media Make-Up Artist
- Theatrical Make-Up Artist
- Make-Up Designer
- Prosthetics Artist
- Special FX Make-Up Artist
- Wig Maker

PROGRESS WITH US

	LEVEL 1	LEVEL 2	LEVEL 3	LEVEL 4+
VOCATIONAL	●	●	●	
APPRENTICESHIP				
UNIVERSITY CENTRE				●

OVERVIEW



Based in our professional make-up studios, these extremely popular courses provide the practical and creative skills needed for a range of careers across theatrical, screen and commercial settings.



Media make-up is a rapidly growing profession within the film industry, TV and theatre, media, fashion and photography industries. There are increasing career opportunities, while new demands challenge the profession to high levels of creativity and expertise.



You will be taught by experienced lecturers who have worked in the industry.



Students have been able to participate in the College pantomime and productions, including their own end-of-year show which was held at STEAM. They have also undertaken work on projects such as a Zombie Nightmare event at The Brunel Shopping Centre and a pop-up shop in Swindon town centre.



Media make-up students have progressed to higher education destinations such as the London College of Fashion, Southampton and Bournemouth universities.



EXTENDED DIPLOMA

PRODUCTION ARTS PRACTICE (MEDIA MAKE-UP)LEVEL
3CAMPUS
NORTH STARLENGTH
2 YEARS

Build on your existing skills and knowledge through a range of advanced topics including: make-up application skills, special effects make-up, costume design, mask making, body make-up for performers, production arts, hairstyling, prosthetics, wig making for performers and the historical context of performance.

EXTENDED CERTIFICATE

PERFORMING AND PRODUCTION SKILLS (MEDIA MAKE-UP)LEVEL
2CAMPUS
NORTH STARLENGTH
1 YEAR

A visual and exciting course giving you a glimpse into the world of a makeup artist. You will study a range of topics including: cosmetic make-up; photographic make-up; fashion make-up; fantasy hair and make-up; professional development plan; theatrical make-up; face painting; basic special effects.

INTRODUCTORY DIPLOMA

VOCATIONAL STUDIES (MEDIA MAKE-UP)LEVEL
1CAMPUS
QUEENS DRIVELENGTH
1 YEAR

This exciting course will give you a taster of media make-up and help you explore the different careers you could have using these skills and knowledge. Topics are varied and include: being organised, working with others, creating a mood board, creating an art, contributing to running an event, demonstrating make-up techniques and demonstrating nail art.



"Everyone at New College Swindon has been very supportive and welcoming; and with my social anxiety I would never have gotten through the last two years without the support of my amazing tutors. I am looking forward to continuing my studies here."

JOANNE VALLANCE

BTEC Extended Diploma
in Production Arts Practice
(Media Make up)



**SCAN HERE
TO LEARN MORE**
bit.ly/3GB3dRz

MOTOR VEHICLE

Whether you're fascinated by the intricate mechanics under the bonnet or dream of fine-tuning the performance of high-speed machines, these courses are designed to set you on the path to becoming a skilled automotive technician.

FUTURE CAREERS

- Motor Mechanic
- Motor Vehicle Breakdown Engineer
- Automotive Electrician
- Motor Vehicle Inspector
- Vehicle Parts Specialist

PROGRESS WITH US

	LEVEL 1	LEVEL 2	LEVEL 3	LEVEL 4+
VOCATIONAL	●	●	●	
APPRENTICESHIP		●	●	
UNIVERSITY CENTRE				

OVERVIEW



It's not just about learning how to change oil or replace spark plugs. It's about becoming part of an industry that's at the forefront of innovation, exploring design, engineering, manufacturing, maintenance and more.



Taught in our industry-standard training facilities and with full equipment, including up-to-date diagnostic equipment, our courses cover all aspects of light vehicle inspection, maintenance, and repair.



Learn from lecturers with extensive industry experience.



Attend trade shows and exhibitions such as the Autosport Show, Performance Car Show and hear from guest speakers from organisations such as Halfords and the RAF.



"I'm really enjoying the course. Some advice I would give someone looking to study this course is that although it is hard work it does pay off and the friends you make will help you like family."

CHELSEA FOWLER

Light Vehicle
Maintenance and Repair
Principles (Automotive)
Level 2 Diploma



"I really enjoyed being part of the motor vehicle course, it made me see the motor vehicle industry in a better perspective and it also had all the resources to help me grow and expand my knowledge."

NUNO FORTUNA

Motor Vehicle Light Repair and Maintenance Level 2

DIPLOMA LIGHT VEHICLE MAINTENANCE AND REPAIR PRINCIPLES

LEVEL 3	CAMPUS NORTH STAR	LENGTH 1 YEAR
------------	----------------------	------------------

Get hands-on experience working on a range of vehicles. This course provides essential knowledge if you want to work as a vehicle technicians in all types of dealerships, maintenance depots and garages. You will learn how to conduct fault finding processes and diagnosis of a range of faults and systems including: auxiliary electrical faults, engine faults, chassis systems, transmission and driveline.

DIPLOMA LIGHT VEHICLE MAINTENANCE AND REPAIR PRINCIPLES FAST TRACK

LEVEL 2	CAMPUS NORTH STAR	LENGTH 1 YEAR
------------	----------------------	------------------

You will study a range of topics that give you a solid foundation in working on light vehicles. These include: health, safety and good housekeeping in the automotive environment; materials, fabrication, tools and measuring devices; routine light vehicle maintenance, including removing and replacing units and components.

SUBSIDIARY DIPLOMA LIGHT VEHICLE MAINTENANCE AND REPAIR TECHNOLOGY

LEVEL 2	CAMPUS NORTH STAR	LENGTH 1 YEAR
------------	----------------------	------------------

You will develop the practical and theoretical knowledge and skills required for work in today's motor vehicle repair industry. This course is designed to enable you to be able to remove and refit components and have a good understanding of the vehicle systems and how they work.

CERTIFICATE AUTOMOTIVE MAINTENANCE

LEVEL 1	CAMPUS NORTH STAR	LENGTH 1 YEAR
------------	----------------------	------------------

This introductory course provides an opportunity to develop and apply the skills needed for both entry-level positions and future career advancement. Throughout the course, you will gain a good understanding of the maintenance procedures vital for the upkeep of automotive systems. You will work on a range of vehicles in our motor vehicle workshops, allowing you to get hands-on experience and sharpen your skills.

APPRENTICESHIP MOTOR VEHICLE SERVICE AND MAINTENANCE TECHNICIAN

LEVEL 3	CAMPUS NORTH STAR	LENGTH 36 MONTHS
------------	----------------------	---------------------

This apprenticeship is ideal if you want to train as a Motor Vehicle and Maintenance Technician. You will learn how to service and repair light vehicles, working in a dealership or for an independent garage. The work ranges from replacing simple parts in motor vehicles through to solving complex faults with the use of diagnostic methods and equipment.

APPRENTICESHIP AUTOCARE TECHNICIAN

LEVEL 2	CAMPUS NORTH STAR	LENGTH 30 MONTHS
------------	----------------------	---------------------

An Auto-care Technician carries out a range of services and repairs to cars, vans and light goods vehicles. Working in an Auto-care or 'Fast-Fit' Centre, you will need a unique combination of technical, retail and customer service skills. You will learn how to use a range of tools, measuring and diagnostic equipment to identify and repair simple system faults.





SCAN HERE
TO LEARN MORE
bit.ly/47uzqWp

PERFORMING ARTS

Whether you dream of commanding the spotlight in a theatre, enchanting crowds with your musical talent, or shaping the future of sound in a recording studio, these courses provide you with unique entry into an industry driven by creativity.

FUTURE CAREERS

- Actor/Actress
- Stage Manager
- Sound Engineer
- Theatre Producer
- Musician
- Music Producer

PROGRESS WITH US

	LEVEL 1	LEVEL 2	LEVEL 3	LEVEL 4+
VOCATIONAL		●	●	
APPRENTICESHIP				
UNIVERSITY CENTRE				

OVERVIEW



Learn, practise, and perform in fantastic facilities, including our Phoenix Theatre, two dance studios.



Our music technology suite has Apple Mac workstations running the latest Logic Pro X software, together with a G5-equipped multi-track recording studio recording direct to hard disk.



Taught by highly qualified staff who have all had professional and industry experience.



Students have gone on visits to New York, West End theatres and dance companies; taken part in local and national competitions such as National Theatre (NT) Connections, One Act Festival, Schools Dance Platform and performed in College productions throughout the year.



Former students have also gone on to study at prestigious performing arts schools and universities, including LAMDA, Bristol Old Vic, BIMM, Birmingham Conservatoire, LABAN, Northern Ballet and RADA.



"The course was very diverse in the training, and claimed to help with the preparation for higher education – I knew I wanted to get into acting professionally, so it seemed perfect. I plan to study a foundation course at the Liverpool Institute of Performing Arts."

EMILY CURTIN

BTEC Level 3
Performing Arts



"The facilities are brilliant. The teachers at New College Swindon are great and really enhanced the course."

BERTIE JAQUES-MATTHIAS

Bertie (Ridgeway School) is undertaking an Extended Diploma in Performing Arts Practice (Drama) at Level 3.

EXTENDED DIPLOMA **DIGITAL MUSIC PRODUCTION**

LEVEL
3

CAMPUS
QUEENS DRIVE

LENGTH
2 YEARS

You will explore music technology and traditional studio recording techniques along with modern digital styles of music production such as house, hip hop, drum and bass and electronica; then this course is for you. Units include: digital music production; music sequencing and production software; composing; music theory; studio recording/mixing; synthesis/sampling; Apple Logic Pro X Audio Workstation software.

EXTENDED DIPLOMA **PERFORMING ARTS (ACTING/MUSICAL THEATRE)**

LEVEL
3

CAMPUS
QUEENS DRIVE

LENGTH
2 YEARS

This course is an essential foundation for anyone wanting to become a Performer. The course is designed to make you a multidisciplinary and employable performer by developing your skills in acting, singing, dance and musical theatre. Topics include: acting skills; theatre for children and theatre in education; film and TV acting; audition technique, acting through song; singing technique and musical theatre; movement and dance.

EXTENDED DIPLOMA **PERFORMING ARTS PRACTICE (DANCE)**

LEVEL
3

CAMPUS
QUEENS DRIVE

LENGTH
2 YEARS

This course will equip you with the dance skills, knowledge and practical experience for progression to higher education and entry to employment within the industry. We offer practical, structured learning with the flexibility to specialize and study in different genres such as, commercial, ballet, jazz and contemporary dance.

EXTENDED CERTIFICATE **PERFORMING AND PRODUCTION ARTS INDUSTRY SKILLS**

LEVEL
2

CAMPUS
QUEENS DRIVE

LENGTH
1 YEAR

If you are keen to specialise in Performing Arts - acting, singing and dancing - then this is the course for you. It will allow you to develop technical and practical skills. The course covers all aspects of performing arts including: skills development; creative interpretation and creating a production; audition and portfolio process; preparing for a production and taking part in a live performance.





"The teachers were really helpful during my time at the College and the adventure trips were really fun."

OLLY PIKE
Level 3 Uniformed
Protective Services



**SCAN HERE
TO LEARN MORE**
bit.ly/47uQmMs

PUBLIC SERVICES

If you're the kind of person who thrives on teamwork, loves facing challenges head-on and wants to serve your community, a public services course is for you.

FUTURE CAREERS

- Emergency Services (Police, Fire, Ambulance)
- Armed Forces
- Probation Officer
- Prison Officer
- Civil Service Administrator
- Intelligence Analyst.

PROGRESS WITH US

	LEVEL 1	LEVEL 2	LEVEL 3	LEVEL 4+
VOCATIONAL		●	●	
APPRENTICESHIP				
UNIVERSITY CENTRE				●

OVERVIEW



Opportunities for you to meet employers such as the police, Army, Navy and RAF, and gain relevant skills such as leadership, teamwork, planning and decision-making.



Access to our on-site Sports Centre, with gym, fitness suite, sports hall and 3G pitch.



Recent trips and initiatives have included: a five day residential "Army Look at Life"; an outdoor activity trip including mountain biking and abseiling; participation in a simulated mass casualty event at RAF Lyneham; rock climbing at Rockstar; participation in a Life Behind Bars conference.



Many students enter work directly within the uniformed public services sector; recent students are now serving within the MET and the British Army 'Rifles'. Students also progress to university courses across the UK, including our own HND in Public Services.



DIPLOMA PROTECTIVE SERVICES

LEVEL
3

CAMPUS
QUEENS DRIVE

LENGTH
2 YEARS

This exciting new pathway allows you to undertake a Diploma in Uniformed Protective Services (worth two A Levels) alongside a Diploma in Criminology (A Level equivalent). Study a wide range of public service operations and an exciting range of criminology topics, including: the changing awareness of crime; criminological theories; crime scene to courtroom; crime and punishment.

DIPLOMA UNIFORMED PROTECTIVE SERVICES FOUNDATION

LEVEL
3

CAMPUS
QUEENS DRIVE

LENGTH
2 YEARS

You will develop a wide range of skills and knowledge about human behaviour, alongside leadership skills and learning how to plan and undertake an expedition. You will take part in lots of outdoor activities and physical training, helping you to develop the resilience and fitness needed to meet the entry requirements for the uniformed protective services.

DIPLOMA PREPARATION FOR PUBLIC SERVICES

LEVEL
2

CAMPUS
QUEENS DRIVE

LENGTH
1 YEAR

Units include: public service skills and support for the community; crime and its effects on society; security procedures in the public services; volunteering in public services; activities and teamwork for the public services; employment in uniformed public services; health and fitness for entry into the uniformed public services; expedition and land navigation skills.

INTRODUCTORY DIPLOMA VOCATIONAL STUDIES (SPORT AND PUBLIC SERVICES)

LEVEL
1

CAMPUS
QUEENS DRIVE

LENGTH
1 YEAR

An introduction into working within the public services, whilst also looking at the sport and leisure industry.



**SCAN HERE
TO LEARN MORE**
bit.ly/3SXKy9S

SPORT

Whether you're an aspiring athlete looking to hone your skills, a tactical mind interested in coaching strategies, or someone with a keen interest in the business side of sports, you've come to the right place.

FUTURE CAREERS

- Sports Coach
- Sports Event Coordinator
- Exercise and Wellness coordinator
- Fitness Trainer
- Fitness Centre Manager
- Sports Management
- Sports Development Officer

PROGRESS WITH US

	LEVEL 1	LEVEL 2	LEVEL 3	LEVEL 4+
VOCATIONAL	●	●	●	
APPRENTICESHIP				
UNIVERSITY CENTRE				●

OVERVIEW



Access to our on-site Sports Centre with gym, fitness suite, sports hall and 3G pitch.



Learn from staff qualified across teaching, sports, and coaching; many with experience of the fitness industry and of playing professional sport.



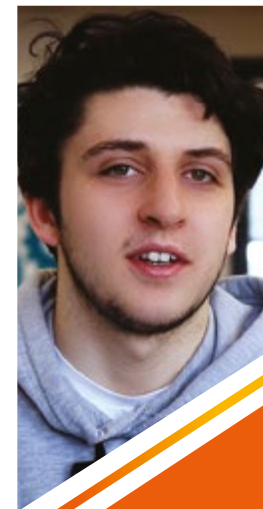
We have also invested in VEO Sports Camera to automatically record matches and Dartfish, a sports performance analysis software tool which will give you the knowledge and experience required by sports employers.



Opportunities to achieve additional vocational qualifications including industry related ones in coaching and gym instructing.



Students progress into roles directly within the sport and leisure industry, including coaching positions working with 'Sporting and Soccer Excellence' and Buzz Gym. Some of our former students have had careers with FIFA whilst others have established businesses related to sports therapy. Others have continued pursuing their sport professionally, with one student embarking on a professional ice hockey career in Finland.



"The College's facilities are really good, especially the Restaurant and 3G pitch. It's a great place to learn and very accommodating to athletes no matter your sport."

MALACHI BUDD

Malachi is studying an Extended Diploma in Sport and Exercise Science at Level 3

You will have the opportunity to join our successful Football (Men's or Ladies), Basketball, and Netball academies.

The academies offer competitive sport and training in combination with full or part-time education at New College.

FOUNDATION DIPLOMA

SPORT

LEVEL 3	CAMPUS QUEENS DRIVE	LENGTH 1 YEAR
------------	------------------------	------------------

You will develop the key skills and an understanding of the theory relating to all aspects of sports and exercise. You will explore areas such as anatomy, psychology, sports development, coaching, and nutrition. You will take a look at what happens behind the scenes in sports, discover different job possibilities, and figure out what aspect of sports and exercise science you might want to pursue in the future. There are two pathways, Coaching and Development or Fitness and Exercise Science.

You will have the option of a top-up in the second year, to gain the full Extended Diploma.

FIRST DIPLOMA

SPORT

LEVEL 2	CAMPUS QUEENS DRIVE	LENGTH 1 YEAR
------------	------------------------	------------------

Discover vital aspects of the industry, including fitness testing, sport and exercise training, sports psychology, hands-on sports performance, and sports leadership. This program not only allows you to build and apply your knowledge but also facilitates the development of practical, communication, and technical skills crucial for success in this competitive industry.

INTRODUCTORY DIPLOMA

VOCATIONAL STUDIES (SPORT AND PUBLIC SERVICES)

LEVEL 1	CAMPUS QUEENS DRIVE	LENGTH 1 YEAR
------------	------------------------	------------------

An introduction into working in the sport and leisure industry alongside public services.







"This course is very fun and informative. We learn a variety of different things that will be beneficial for a career in the industry such as airport codes, different reasons why people go on holiday and different types of accommodation and transport."

RUBY REAPE

Level 2 Travel and Tourism



SCAN HERE
TO LEARN MORE
bit.ly/3sPDste

TRAVEL AND TOURISM

Do you dream of exploring new places, meeting people from all walks of life and turning your love for travel and adventure into a career, then take a look at our travel and tourism courses.

FUTURE CAREERS

- Travel Agent
- Tour Operator
- Hotel Manager
- Cabin Crew
- Tourism Marketing Specialist
- Airline Customer Services Rep

PROGRESS WITH US

	LEVEL 1	LEVEL 2	LEVEL 3	LEVEL 4+
VOCATIONAL		●	●	
APPRENTICESHIP				
UNIVERSITY CENTRE				

OVERVIEW



The travel and tourism sector is a vibrant and dynamic industry, contributing significantly to the global economy. From working in airports, hotels, and travel agencies to planning events and managing tourist attractions, the possibilities are vast.



Taught by experienced staff, who have also worked with leading travel and tourism organisations and have useful links within the industry.



Students have progressed to university to study courses in tourism and events management. Others have successfully achieved full-time employment with companies including TUI, Wizz Air and Heathrow Airport.



Trips and visits have included a British Airways S.E.P. Training Day; and Disneyland Paris whilst work and employer experience has included the Cheltenham Festival.



DIPLOMA TRAVEL AND TOURISM EXTENDED

LEVEL
3

CAMPUS
NORTH STAR

LENGTH
1 YEAR

During this advanced course, you will develop your awareness of the latest travel trends, both nationally and internationally. You will also explore the importance of marketing, responsible tourism and discover what it takes to become a successful holiday representative. You will study units including: the business of travel and tourism; event organisation; customer service.

FOUNDATION DIPLOMA TRAVEL AND TOURISM

LEVEL
3

CAMPUS
NORTH STAR

LENGTH
1 YEAR

This course covers a wide range of areas, including: customer service, marketing and sales roles; in tourist boards, travel agencies, airlines and holiday companies. You will gain skills, experience and knowledge about travel and tourism in the UK and abroad in both European and long-haul destinations.

DIPLOMA TRAVEL AND TOURISM

LEVEL
2

CAMPUS
NORTH STAR

LENGTH
1 YEAR

You will study several core units and other, specialist units to include: the business of travel and tourism; international destinations; customer service and factors affecting worldwide travel and tourism.



"New College Swindon has really understanding teachers. They treat you like a young adult rather than a child. The College is also really easy to get around. I like the Wellbeing room, it lets me unwind."

ISABELLA FYFE

Isabella studied as a Pre-16 and is now studying A Levels in Business, Accounting, and Economics.

PRE-16

Our Pre-16 offer provides a flexible student-centred programme for electively home educated young people, allowing you the opportunity to access courses you may not be able to study at home.

- EHE Pre-16s can access up to three GCSEs in each academic year, allowing a focused delivery and ensuring the time is still available for active home education to continue.
- You will be able to sit additional exams here at NCS
- Some schools may agree to fund a student to attend Pre-16; in this situation a full-time timetable of five GCSEs per academic year can be chosen.
- The application process includes an initial assessment and interview; you must be mature enough to manage yourself within the FE environment.

We have a Pre 16 base room and office area where you can socialise and study, providing a smaller calm space for those who are not quite ready to access other College areas. This is a warm and friendly environment. This room creates a sense of belonging and acceptance and is key to our ongoing success and high student engagement.

Rigorous safeguarding procedures are in place to ensure that as one of the youngest members of college, you will be able to thrive in a safe and supportive environment. The Pre 16 team work closely with parents to ensure your needs are met; both pastorally and academically.

SCAN HERE
TO LEARN MORE



bit.ly/47dzQjQ





"I have received a lot of support from the college to help me achieve my goals. Last year I did the Routes to Employment course to help me find work experience and a job for the future. I'm going to be starting my work placement at the Blunsdon House Hotel soon."

KAYLEE WEAVING
Supported Internship



SCAN HERE

bit.ly/46eW0Rw

FOUNDATION LEARNING

Foundation Learning supports you if you need help with deciding your next steps or if you do not have the grades for your chosen area. We provide an inclusive environment that helps you access education and learning through practical means. Foundation Learning is a fantastic place for you to start your journey towards an independent future.

We have a purpose-built area that gives you a safe space to learn and transition into college life. We also have great resources to support students with additional needs.

The staff in Foundation Learning have a lot of knowledge and experience in working with those who have barriers to learning. They are trained in how to assist students with various learning difficulties and how to make learning accessible to all.

Through our Supported Internship we have worked with a range of local businesses such as Hall and Woodhouse, Blunsdon House Hotel, Eclipse Labels and Aqualush.

Initiatives that Foundation Learning students have been involved in have included:

- Starting a coffee shop at college which helped them to gain valuable employability skills
- Creating a memorial garden dedicated to a staff member who passed away
- Attending a beauty show in London; running a Winter Fair to raise funds for a trip to Lydiard Park.

INDEPENDENCE

(SKILLS FOR FURTHER LEARNING AND EMPLOYMENT)

LEVEL
ENTRY LEVEL 3

CAMPUS
NORTH STAR

LENGTH
2 YEARS

This practical course supports you if you have additional needs, to become more independent and prepare for your future as an adult. It helps you learn the skills needed to operate in modern society and live a fulfilling life in the community. There are activities including: running a College café; growing vegetables to sell and cook; trips and visits into the community; projects; workplace experience days to learn about the world of work; learning to travel on public transport. You will also continue to work on the Maths and English skills you need. On completion, you can progress to either the Pre-Internship or Supported Internship programme (with an EHCP).

PRE-SUPPORTED INTERNSHIP

(ROUTE TO EMPLOYMENT)

CAMPUS
NORTH STAR

LENGTH
1 YEAR

Designed to support students with additional needs prepare for employment. The programme will focus on your understanding of what skills you have and need to gain a job. This is a very practical programme which contains work experience. You will have the opportunity to experience different working environments and identify the different types of jobs you may be good at or enjoy working in, in the future. On completion, students (with an EHCP) can progress to the Supported Internship programme or move into work.

SUPPORTED INTERNSHIP

CAMPUS
NORTH STAR

LENGTH
1 YEAR

A Supported Internship is a programme designed to support young people who have an Education, Health and Care Plan (EHCP) to gain paid employment. On this programme you will be supported by a Job Coach who will work with you to identify your strengths and the type of work you would like to move into. The Job Coach will then work with employers to find an appropriate placement for you, with the aim of a paid position at the end of the programme.

DFN PROJECT SEARCH SUPPORTED INTERNSHIP

CAMPUS
MAINLY OFFSITE AT GWH

LENGTH
1 YEAR

This programme is specifically for 18 to 24-year-olds who have an Education, Health and Care Plan (EHCP) and want to obtain employment. It is led by DFN Project SEARCH, an organisation committed to transforming the lives of young people with learning disabilities and autism. You will spend most of your time in a work placement, supported by a Job Coach. During this programme, you will complete a variety of work experience roles within Great Western Hospital. Potential placements include: switchboard, portering, security, catering, cleaning and estates.

VOCATIONAL CAROUSEL

(ROUTES TO A CAREER)

LEVEL
ENTRY LEVEL 3 AND LEVEL 1

CAMPUS
NORTH STAR

LENGTH
1 YEAR

Suitable for you if you are working at Entry Level 3 or at Level 1 but not sure of your future career path. You can try different vocational areas including: Art; Animal Care; Bricklaying; Business Studies; Carpentry; Catering; Childcare; Enterprise; Hair and Beauty; Horticulture; Hospitality; IT Fundamentals; Office Skills; Painting and Decorating; Sport. If you have not yet achieved grade 4/C in GCSE Maths and English you will continue to study these areas. On completion, you can progress to a Level 1 vocational programme.





"New College Swindon has great teachers and learning English and Maths is going to help me achieve my goals for the future. The lessons are great, we work with partners and in groups, which is really helpful."

WALI KHAN
ESOL Level 2

ESOL

ENGLISH FOR SPEAKERS OF OTHER LANGUAGES



SCAN HERE

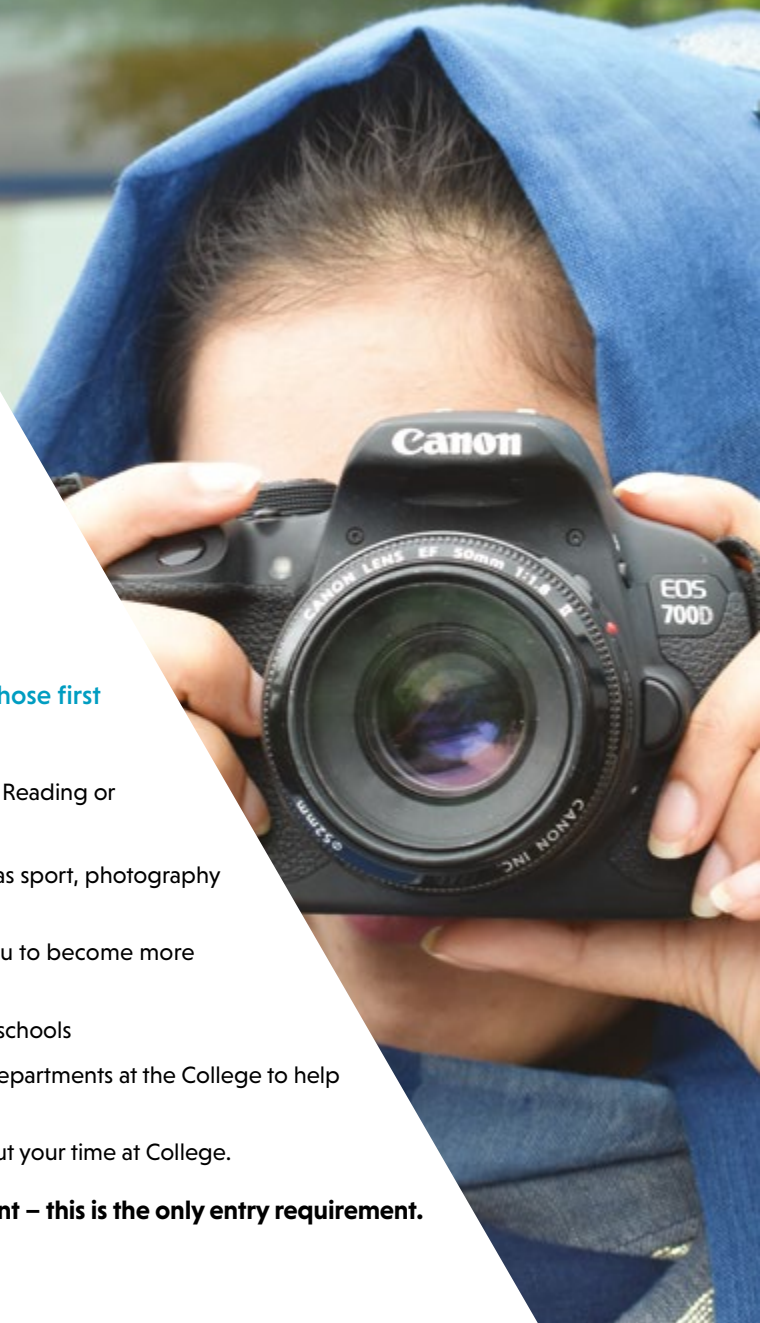
bit.ly/3ueQBN1

These full-time courses are for young people aged 14-19 whose first language is not English.

If you need to develop your language skills in Speaking, Listening, Reading or Writing, we have groups at different levels to help.

- You will also study Maths, ICT and take part in fun activities such as sport, photography and arts
- The courses focus on living and working in the UK, enabling you to become more confident when interacting with others
- We will take into account your qualifications from your previous schools
- You will have the opportunity to attend taster sessions in other departments at the College to help you decide on your long-term career goals
- You will be supported by a dedicated progress coach throughout your time at College.

Once you apply, you will be invited for a language assessment – this is the only entry requirement.



NEXT STEPS

IT'S NEVER TOO EARLY TO START THINKING ABOUT WHAT YOU WANT TO DO AFTER COLLEGE.

In 2023, our higher education provision was granted University Centre status. This, along with the Swindon and Wiltshire Institute of Technology, gives you access to quality degree-level study right here on your doorstep.

You can choose from a range of HNDs, foundation degrees, bachelor degrees and higher apprenticeships. Subjects include animal management, applied science, business, childcare, construction, creative arts, creative media, engineering, health care, IT, media make-up, public services, sport and travel and tourism.

There are many advantages to staying with us for your higher education study:

- More affordable tuition fees
- Cheaper living costs
- Convenient location
- Smaller class sizes
- More face-to-face time with lecturers
- State-of-the-art facilities
- The ability to fit study around work and family life.



SCAN HERE
he.newcollege.ac.uk



SCAN HERE
www.sawiot.ac.uk



OUR UNIVERSITY PARTNERS

**OXFORD
BROOKES
UNIVERSITY**

 **UNIVERSITY OF
GLOUCESTERSHIRE**

DATES FOR YOUR DIARY

Our events are the best way to come and experience exactly what we have to offer.

7 OCT 2023 - **OCTOBER OPEN DAY** (NORTH STAR AND QUEENS DRIVE)

16 NOV 2023 - **UNIVERSITY CENTRE OPEN EVENING** (NORTH STAR)

24 JAN 2024 - **OPEN EVENING** (NORTH STAR)

31 JAN 2024 - **OPEN EVENING** (QUEENS DRIVE)

6 FEB 2024 - **APPRENTIFEST** (STEAM MUSEUM)

27 FEB 2024 - **A LEVELS AND HIGH FLYERS INFO EVENING** (QUEENS DRIVE)

14 MAR 2024 - **OPEN EVENING** (NORTH STAR)

27 MAR 2024 - **OPEN EVENING** (QUEENS DRIVE)

18 JUN 2024 - **OPEN EVENING** (NORTH STAR AND QUEENS DRIVE)

26 JUN TO 2 JUL 2024 - **COLLEGE EXPERIENCE** (NORTH STAR AND QUEENS DRIVE)

If you have any questions on our courses or your application, our liaison team are here to help.

Call: **01793 495000**

Email: **admissions@newcollege.ac.uk**

www.newcollege.ac.uk

Follow us on social   

