



A LEVEL GUIDE

SEPTEMBER 2019 ENTRY



New College, Queens Drive, Swindon SN3 1AH

CHECK US OUT ON SOCIAL MEDIA FOR THE LATEST COLLEGE NEWS



CONTENTS

- 01 A LEVELS AT NEW COLLEGE
- 02 YOUR STUDY PROGRAMME
- 02 EXTRAORDINARY EXTRAS
- 02 PRIVATE STUDY AND E-LEARNING
- 02 DEVELOPMENT COACHING,
UNIVERSITY AND CAREERS ADVICE
- 02 TUTORIAL AND STUDY SKILLS
- 02 EMPLOYABILITY SKILLS
AND WORK EXPERIENCE
- 02 STUDENT SUPPORT SERVICES
- 03 THE ROUTE TO UNIVERSITY
- 03 WHERE DO NEW COLLEGE
STUDENTS GO TO UNIVERSITY?
- 03 APPLYING TO
RUSSELL GROUP UNIVERSITIES
- 03 HIGH FLYERS PROGRAMME
- 04 ENTRY REQUIREMENTS
- 05 BUSINESS AND
ENTREPRENEURSHIP PATHWAY
- 06 CREATIVE ARTS PATHWAY
- 07 DESIGN AND MEDIA PATHWAY
- 08 ENGINEERING PATHWAY
- 09 ENGLISH AND COMMUNICATION PATHWAY
- 10 ENVIRONMENT AND
EARTH SCIENCE PATHWAY
- 11 FINANCIAL ACADEMY PATHWAY
- 12 HUMANITIES PATHWAY
- 13 LAW AND LEGAL PATHWAY
- 14 MATHS, PHYSICS AND
COMPUTER SCIENCE PATHWAY
- 15 MEDICAL HEALTH PACKAGE
- 16 PERFORMING ARTS PATHWAY
- 17 SOCIAL SCIENCES PATHWAY
- 18 STEM AND HEALTHCARE PATHWAY
- 19 A LEVEL CASE STUDIES



A LEVELS AT NEW COLLEGE

- **NEW FOR 2019!** We have made some exciting new changes to our A Level provision for September 2019. Our A Levels are now linear — you will take exams at the end of two years of study. This is in line with most other A Level centres and to provide you with more teaching time for your A level. We have also introduced A Level pathways, underpinned by an employability focus, to help you identify the best subjects for a particular career/university destination, whilst still providing plenty of choice. Subjects are clustered in pathways, to enhance and complement each other - you will follow a specific A Level pathway, taking subjects from the core and additional choices listed. Our pathways include “wrap around” support such as tutorials, study skills development and pastoral care as well as specific enrichment choices and initiatives. These changes will help our students to achieve the best possible results and progression at the end of their courses.
- At New College, most students take three A Levels; some do four, if they have a track record of high achievement. As well as our standard entry requirements, some subjects require higher GCSE grades. These are listed on page 4.
- We offer over 35 A Level subjects, far more than school sixth forms. Our 2018 pass rate was 97% and over 40% entries achieved A* to B grades. In the January 2019 school performance tables, we provided the highest A Level progress scores of any other state school or college in the Swindon area.

DISCLAIMER

Every effort has been made to ensure that all information contained within this booklet is accurate at the time of going to print (June 2019). New College accepts no responsibility for omissions or errors and reserves the right to make changes or cancellations to courses and their content. We cannot accept any liability arising out of any changes or cancellations. We will always strive to keep students as up to date as possible and offer alternatives where available. Extraordinary Extras are shown as examples only.

YOUR STUDY PROGRAMME



Your study programme consists of several wrap-around components as shown, with your A Level pathway forming the core learning.

You choose a pathway and then select from the CORE subjects as directed, choosing a further one or two subjects from the ADDITIONAL subjects.

Please note that some of the pathways include vocational choices, such as a Subsidiary Diploma — these are equivalent to one A Level.

EXTRAORDINARY EXTRAS

We want to ensure that your A Level studies are career focused and linked to your goals, whether university or your chosen career destination. These Extras offer initiatives which are designed to develop the skills and qualities to help you succeed. They form a crucial part of your study programme and are unlikely to be available at any other provider.

PRIVATE STUDY AND E-LEARNING

Studying for A Levels and university degrees requires motivation and the development of independent research and study skills. We run supervised support sessions and offer study skills sessions, but we also offer quiet study spaces to help you develop these important skills yourself.

DEVELOPMENT COACHING, UNIVERSITY AND CAREERS ADVICE

Our Careers and HE Advisors will provide advice to help you decide your best route into work or university. You'll have the opportunity to attend local university and employability fairs and Open Days.

TUTORIAL AND STUDY SKILLS

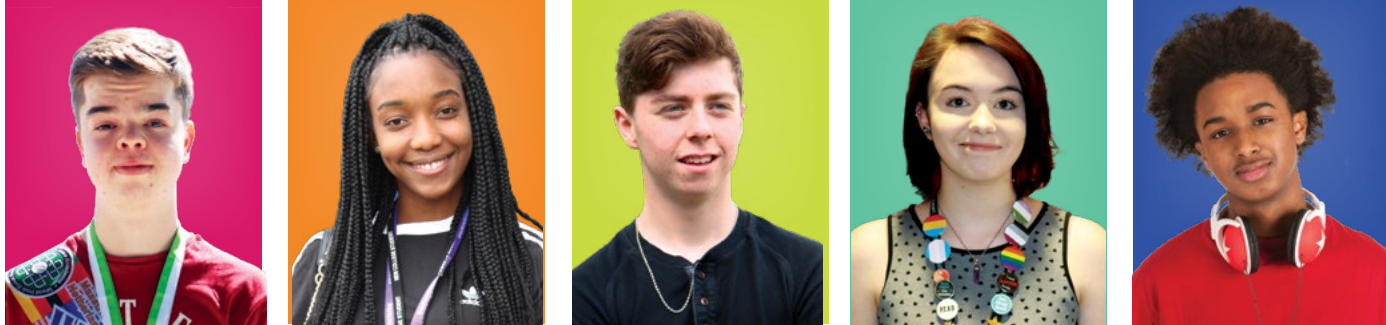
You will be assigned a personal tutor who works with you on both a one-to-one basis as well as via group delivery to help develop personal, social and employability skills. S/he will also help with UCAS and job applications.

EMPLOYABILITY SKILLS AND WORK EXPERIENCE

Employability skills are reinforced in lessons and developed via College events and initiatives such as mentoring and employer visits. You will also be expected to undertake work experience relevant to your chosen A Level pathway and to fit this around your timetable.

STUDENT SUPPORT SERVICES

Our extensive pastoral and welfare provision supports you throughout your study and includes nurses, counsellors and chaplaincy team. If you have a medical condition, physical or sensory impairment, learning difference, Autistic Spectrum Condition or any other learning need, our Additional Support Team can help.



THE ROUTE TO UNIVERSITY

Each year over 500 New College students progress to university or higher education.

We're ambitious for you - if university is part of your plan, we want you to achieve the best grades you can so that you can choose the degree subject and university which is right for you. Our staff — lecturers, personal tutors, specialist career advisors — will be able to support and guide you to achieve these goals.

WHERE DO NEW COLLEGE STUDENTS GO TO UNIVERSITY?

*In 2018, students progressed to universities such as **Bristol**, **Birmingham**, **Oxford** and **Southampton** and many local universities such as **Bristol UWE**, **Bath**, **Cardiff**, **Reading**, **Gloucestershire** and **Bath Spa**. Degree subjects were as diverse as **Psychology**, **Criminology**, **Japanese Studies**, **Film**, **Animal Science**, **Human Biology**, **International Media and Communication** and **Law**.*

Students also stayed on at New College to study foundation degrees or HNDs in subjects including Textiles, Cyber Security and Public Services.

APPLYING TO RUSSELL GROUP UNIVERSITIES

*The Russell Group represents 24 leading UK universities, including: **Birmingham**; **Bristol**; **Cambridge**; **Durham**; **Edinburgh**; **King's College London**; **Leeds**; **Liverpool**; **Manchester**; **Newcastle**; **Nottingham**; **Oxford**; **Sheffield**; **Southampton**; **Warwick** and **York**. They are known for their research, teaching quality and links with businesses and the public sector and represent the cutting edge of the UK university sector.*

The Russell Group have released an interactive website, which helps students to understand which A Levels are required for various degree subjects at university — you may wish to use this: www.informedchoices.ac.uk

HIGH FLYERS PROGRAMME

If you are predicted to achieve at least six grade 7s at GCSE, you can join our High Flyers Programme.

You will receive additional support and advice, including guidance on applying to Oxford or Cambridge, plus access to a number of initiatives designed to both challenge and support you in your study. You can find out more about the programme in our prospectus.

ENTRY REQUIREMENTS

Our standard entry requirement for an A level programme at New College are a minimum of five grade 4s (or Cs), one of which must be English Language.

SUBJECT	ENTRY REQUIREMENTS — STANDARD PLUS THE FOLLOWING:
3D: PRODUCT DESIGN	Preferably grade 4/C or above in an art or DT subject OR a portfolio
ACCOUNTANCY/AAT LEVEL 2	Grade 4/C in Maths
ACCOUNTING	Grade 6/B or above in English Language and Maths
ANCIENT HISTORY	Grade 5/C or above in English Language; and in English Lit and History if taken
APPLIED SCIENCE	Grade 4/C in three single sciences at GCSE or two grade 5/Bs or above in Combined Science or Core and Additional Science
ART: HISTORICAL PRACTICE	Preferably grade 4/C or above in an art or DT subject OR a portfolio
BIOLOGY	Grade 6/B or above in Biology or Additional Science; grades 66 or above in Combined Science; grade 5/C or above in English Language and Maths
BUSINESS	Grade 4/C or above in Maths
CERTIFICATE IN FINANCIAL STUDIES	Grade 4/C in Maths
CHEMISTRY	Grade 6/B or above in Chemistry or Additional Science; grades 66 or above in Combined Science; grade 5/C or above in English Language and Maths
CLASSICAL CIVILISATION	Grade 4/C or above in English Literature and/or History with one grade of these being at 5 or higher
COMPUTER SCIENCE	Grade 6/B or above in Maths
CORE MATHS	Grade 5/C or above in Maths
DIGITAL MUSIC PRODUCTION	Standard entry requirements or the ability to show strong experience in the subject
DRAMA	Grade 4/C or above in Drama OR be prepared to audition
ECONOMICS	Grade 6/B or above in Maths and English Language
ENGLISH LANGUAGE	Grade 4/C or above in English Language and English Literature with one grade being a 5 or above
ENGLISH LANGUAGE & LITERATURE	Grade 4/C or above in English Language and English Literature with one grade being a 5 or above
ENGLISH LITERATURE	Grade 4/C or above in English Language and English Literature with one grade being a 5 or above
ENVIRONMENTAL SCIENCE	Grade 4/C or above in Biology or Combined or Additional Science and Maths
FILM STUDIES	Grade 5/C or above in English Language and English Literature; if no grade 5/C in the latter, then grade 6/B in Media Studies or grade 5/C in Film Studies is required
FINE ART	Preferably a grade 4/C in Art
FRENCH	Grade 5/C or above in French
FURTHER MATHS	Grade 7/A in Maths. Can only be taken with A Level Maths
GEOGRAPHY	Grade 5/C or above in English Language and grade 4/C in Maths. If Geography GCSE was taken, a grade 5/C or above
GERMAN	Grade 5/C or above in German
GOVERNMENT & POLITICS	Grade 5/C in both English Language and English Literature
GRAPHIC DESIGN & ILLUSTRATION	Preferably grade 4/C or above in an art or DT subject OR a portfolio
HISTORY — BRITISH & AMERICAN 20 TH CENTURY	Grade 5/C or above in English Language and English Literature. If History GCSE was taken, a grade 5/C or above is required
HISTORY — BRITISH & EUROPEAN 20 TH CENTURY	Grade 5/C or above in English Language and English Literature. If History GCSE was taken, a grade 5/C or above is required
HISTORY — THE TUDORS & FRENCH REVOLUTION	Grade 4/C or above in English Language and English Literature. If History GCSE was taken, a grade 5/C or above is required
LAW	At least two grades 6/B or above including English Language and at least three other grades 5/C or above
MATHS	Grade 6/B or above in Maths
MEDIA STUDIES	Grade 5/C or above in English Language; and advantageous to have achieved 4/C or above in Media Studies, Film Studies or English Lit
MUSIC	Grade 4/C or above in GCSE Music; and or Grade 4 in Theory with a minimum of Grade 4 in instrument or voice
PHILOSOPHY	Grade 5/B in English Language and Maths
PHOTOGRAPHY	Standard entry requirements plus a real enthusiasm
PHYSICS	Grade 6/B or above in Physics or Additional Science; grades 66 or above in Combined Science; grade 6/B or above in Maths
PSYCHOLOGY	Grade 4/C or above in Maths and two Sciences, which can include GCSE Psychology
RELIGIOUS STUDIES	Standard entry requirements and an enquiring mind. You do not need to have studied GCSE Religious Studies
SOCIOLOGY	Standard entry requirements and an interest in a wide range of social matters
SPANISH	Grade 5/C or above in Spanish
SPORTS AND EXERCISE SCIENCE	Grade 4/C or above in Maths and Science
TEXTILES	Preferably grade 4/C or above in an art or DT subject OR a portfolio



BUSINESS AND ENTREPRENEURSHIP PATHWAY

CHOOSE TWO OR MORE CORE SUBJECTS

Accounting

Business Studies

Certificate in
Financial Studies
(vocational)

Economics

Maths

Psychology



CHOICE OF ADDITIONAL SUBJECTS*:

* These subjects are recommended but other options are also available

- Classical Civilisation
- English Language
- English Language and Literature
- Environmental Science
- French
- German
- Government and Politics
- Graphic Design
- History (British & American 20th Century)
- History (British & European 20th Century)
- Law
- Media Studies
- Philosophy
- Religious Studies
- Sociology
- Spanish



EXTRAORDINARY EXTRAS

- Core Maths
- Debating Club
- Dragon's Den pitch training with local employers
- Enterprise Qualification
- Extended Project Qualification
- Grade Booster Event, Birmingham
- Hotel Takeover
- Student Executive
- University masterclasses

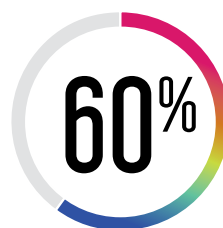


TYPICAL CAREER PATHWAYS

- Accountancy
- Business administration and management
- Business Consultant
- Digital communications
- Entrepreneur
- Human Resources
- Marketing
- Sales Management
- Solicitor



There were **5.6 million** small businesses at the start of 2018



Total employment in SMEs was **16.3 million**; **60%** of all private sector employment in the UK



In 2018 the combined annual turnover of SME's was **£2 billion**



CREATIVE ARTS PATHWAY

CHOOSE ONE OR TWO CORE SUBJECTS

Art Historical Practice

Fashion and Textiles

Fine Arts

Graphic Design

Photography

Digital Music Production
(vocational)



CHOICE OF ADDITIONAL SUBJECTS*:

* These subjects are recommended but other options are also available

- Classical Civilisation
- Biology
- Business Studies
- English Language
- English Language and Literature
- Film Studies
- History (British & American 20th Century)
- History (British & European 20th Century)
- Media Studies
- Product Design
- Psychology
- Sociology
- Spanish



EXTRAORDINARY EXTRAS

- College Production
- Enterprise Qualification
- Extended Project Qualification
- Fashion Show
- Film Club and competitions
- Journalism
- Photography
- Pop-up photography shop/exhibition



TYPICAL CAREER PATHWAYS

- Advertising
- Animation
- Architecture
- Art Curating
- Fashion Design
- Fashion Photography
- Fine Artist/Sculptor
- Graphic Design
- Interior Design
- Multimedia journalism
- Product Design
- Set Design



Every year the creative arts sector contributes **£92 billion** to the UK economy



In 2017, over **3 million people** were employed in the sector



The creative economy accounts for **1 in 11 jobs** across the UK



DESIGN AND MEDIA PATHWAY

CHOOSE ONE OR TWO CORE SUBJECTS

Film Studies

Graphic Design

Media Studies

Photography

Product Design



CHOICE OF ADDITIONAL SUBJECTS*:

* These subjects are recommended but other options are also available

- Business Studies
- Classical Civilisation
- Digital Music Production (vocational)
- English Language
- English Language and Literature
- Fine Art
- French
- History (British & American 20th Century)
- History (British & European 20th Century)
- Maths
- Physics
- Sociology
- Spanish
- Sport & Exercise Science (vocational)
- Textiles



EXTRAORDINARY EXTRAS

- College Production
- Extended Project Qualification
- Fashion Show
- Film Club and competitions
- Live brief work with employers
- Photography
- Student Magazine



TYPICAL CAREER PATHWAYS

- Advertising and branding
- Animation
- Artworker
- Corporate Communications
- Creative Director
- Film Editing
- Graphic Designer
- Journalism or PR
- Media research
- Radio production
- Web design



In 2017, UK consumers spent more on digital media - music, video and games - than 'traditional' media - **£7.2 billion**

Senior graphic designers earn between **£35,000** and **£55,000** a year



ENGINEERING PATHWAY

CHOOSE BOTH CORE SUBJECTS

Maths

Physics



CHOICE OF ADDITIONAL SUBJECTS*:

* These subjects are recommended but other options are also available

- Business Studies
- Chemistry
- Computer Science
- Economics
- Engineering (Extended Certificate)
- Further Maths
- Geography
- Product Design



EXTRAORDINARY EXTRAS

- Able Maths Course
- Employer Lectures
- Engineering (Extended Certificate)
- Maths Team Challenge
- National Maths Challenge
- Visits to employers



TYPICAL CAREER PATHWAYS

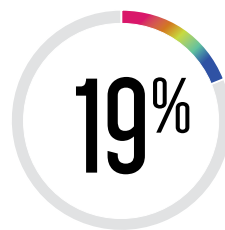
- Acoustics Engineer
- Business Improvement
- Civil Engineering
- Design Engineering
- Electrical Engineering
- Logistics
- Mechanical Engineering
- Manufacturing
- Project Management
- Quality and supply chain
- Systems Engineering



Average starting salaries in the sector are **£25,607**, compared with **£21,700** across the sector



Sector forecast to generate **£241 billion** to UK GDP by 2020



19% of the total UK workforce are employed in the engineering sector



ENGLISH AND COMMUNICATION PATHWAY

CHOOSE ONE CORE SUBJECT

English Language

English Language and English Literature

English Literature



CHOICE OF ADDITIONAL SUBJECTS*:

* These subjects are recommended but other options are also available

- Ancient History
- Classical Civilisation
- Digital Music Production
- Film Studies
- French
- Graphic Design
- Government and Politics
- History (British & American 20th Century)
- History (British & European 20th Century)
- Law
- Media Studies
- Philosophy
- Psychology
- Religious Studies
- Sociology
- Spanish



EXTRAORDINARY EXTRAS

- Creative Writing and Reading group
- Debating Club
- Extended Project Qualification
- Harbour Project
- Journalism
- Meet the Author Event
- Publishing
- Room to read
- Student Executive
- Student magazine
- University trips



TYPICAL CAREER PATHWAYS

- Advertising
- Charity Work
- Communications
- Copywriter
- Editorial
- Journalism
- Marketing
- Public Relations
- Publishing
- Teaching
- TV Presenting
- Writing



Teachers' starting salary was **£23,720** in 18/19



There were an estimated **190,000** UK jobs in the advertising and marketing industries in 2017



In 2018 there were **61,000** employed journalists in the UK



ENVIRONMENT AND EARTH SCIENCE PATHWAY

CHOOSE AT LEAST TWO CORE SUBJECTS

Applied Science

Chemistry

Geography

Biology

Environmental Science

Maths



CHOICE OF ADDITIONAL SUBJECTS*:

* These subjects are recommended but other options are also available

- Classical Civilisation
- Computer Science
- English Language
- English Language and Literature
- German
- History (British & American 20th Century)
- History (British & European 20th Century)
- Media Studies
- Physics
- Spanish



EXTRAORDINARY EXTRAS

- A Level Geography Conference
- Core Maths
- Extended Project Qualification
- Environmental Task Force
- Field work
- Journalism
- Voluntary Conservation work



TYPICAL CAREER PATHWAYS

- Architecture
- Cartography
- Conservation
- Countryside Officer
- Ecologist
- Environmental Health
- Land Management
- Oceanography
- Surveying
- Urban/Town planning
- Visitor Experience
- Woodland Creation

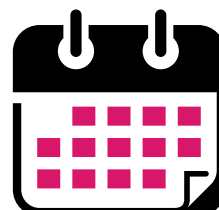


10,600

The Environment Agency has a workforce of **10,600**



The average salary of environment and sustainability professionals is **£44,000+**



Over half of Environmental Science graduates are in full time employment **six months** after graduation



FINANCIAL ACADEMY PATHWAY

CHOOSE AT LEAST TWO CORE SUBJECTS

Accountancy/AAT Level 2
(vocational)

Business Studies

Certificate in
Financial Studies
(vocational)

Economics

Maths

N.B. AAT must be taken with Certificate in Financial Studies



CHOICE OF ADDITIONAL SUBJECTS*:

* These subjects are recommended but other options are also available

- English Language
- English Literature
- Sociology
- English Language and Literature
- Further Maths
- Spanish
- Geography



EXTRAORDINARY EXTRAS

- Charity & Fundraising Taskforce
- Core Maths
- Dragon's Den pitch training with local employers
- Employer lectures
- Finance and Economics master class
- Grade Booster event Birmingham
- Student Investor challenge
- World Skills event in Financial Advice



TYPICAL CAREER PATHWAYS

- Accountancy
- Banking and finance
- Insurance
- Auditing
- Economics
- Tax Management



Graduate starting salaries range from **£17,000-£42,000** in accounting and professional services, **£27,000-£55,000** in banking and finance, and **£40,000-£56,000** in investment banking



There are **260,000** professional accountants in the UK and Ireland (2017)



In 2018, the UK financial services sector employed **1.1 million** people.



HUMANITIES PATHWAY

CHOOSE TWO OR MORE CORE SUBJECTS

Ancient History

Government and Politics

Philosophy

Classical Civilisation

History
(all choices, dependent on timetable)

Religious Studies



CHOICE OF ADDITIONAL SUBJECTS*:

* These subjects are recommended but other options are also available

- English Language
- English Language and Literature
- English Literature
- Geography
- Law
- Maths
- Sociology
- Spanish



EXTRAORDINARY EXTRAS

- Debating Club
- Extended Project Qualification
- Journalism
- German
- Student Executive
- Student Governor
- Student Magazine
- University Taster Day



TYPICAL CAREER PATHWAYS

- Archaeology
- Church
- Civil Service
- Journalism
- Library work
- Local Government
- Museum work
- Politics
- Registrar
- Teaching
- Third sector: charity and voluntary work

5.2m

In 2018, central and local government employed nearly **5.2 million** people



Median salary in 2017 for curators (managers) was **£44,494**



Teaching is in the **top 10** most employable degrees in the UK



LAW AND LEGAL PATHWAY

CHOOSE ONE OR MORE CORE SUBJECTS⁺

⁺ Must only include one English subject

English Language

English Literature

English Language and Literature

Government and Politics

Law



CHOICE OF ADDITIONAL SUBJECTS*:

* These subjects are recommended but other options are also available

- Business Studies
- Classical Civilisation
- Geography
- History (British & American 20th Century)
- History (British & European 20th Century)
- History (The Tudors & French Revolution)
- Maths
- Philosophy
- Psychology
- Sociology
- Spanish



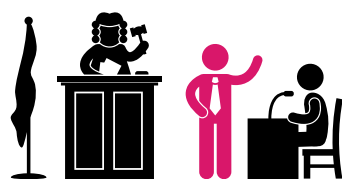
EXTRAORDINARY EXTRAS

- Debating Club
- Extended Project Qualification
- Mock Elections



TYPICAL CAREER PATHWAYS

- Barrister
- Civil Service
- Company Secretary
- Conveyancer
- Investment Banking
- Legal Executive
- Paralegal
- Police Officer
- Probation Officer
- Prison Officer
- Solicitor
- Youth Worker



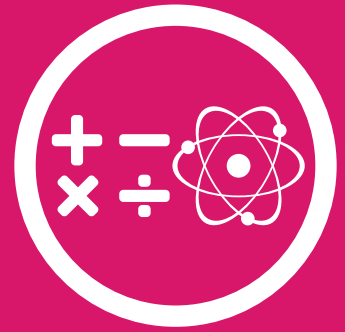
In April 2019, there were **145,547** practising solicitors



In 2017, barristers with over 5 years' experience could earn **£50,000- £200,000**



Law is one of the **Daily Telegraph's top 10** most popular degree courses.



MATHS, PHYSICS AND COMPUTER SCIENCE PATHWAY

CORE SUBJECTS

Maths

PLUS ONE OR MORE OF

Computer Science

Physics



CHOICE OF ADDITIONAL SUBJECTS*:

* These subjects are recommended but other options are also available

- Biology
- Chemistry
- Economics
- Fine Art
- Further Maths
- Geography
- Music



EXTRAORDINARY EXTRAS

- Able Maths Course
- Employer visits and talks
- Engineering Certificate
- E-Sports tournament
- Extended Project Qualification
- National Maths Challenge
- Physics Olympiad
- Senior Maths Challenge

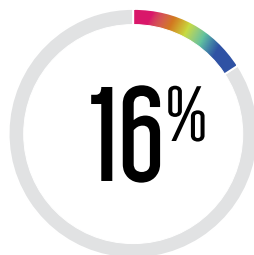


TYPICAL CAREER PATHWAYS

- Accountancy
- Actuarial Consultant
- Artificial intelligence
- Data Scientist
- Engineering
- Physicist
- Robotics
- Software engineering
- Solutions/Systems architecture



Median starting salaries in IT are **£30,000**



The number of UK undergraduates studying STEM subjects **increased by 16%** between 2009 & 2019



The Engineering Council reports that STEM graduates have **higher employment rates & salaries** compared to the general graduate population



MEDICAL HEALTH PATHWAY

CORE SUBJECTS

Chemistry

PLUS ONE OR MORE OF

Biology

Maths

Physics

Pathway only available to students with 6 or more grade 7-9s



CHOICE OF ADDITIONAL SUBJECTS*:

* These subjects are recommended but other options are also available

- English Language
- English Language and Literature
- English Literature
- French
- Further Maths
- Geography
- German
- History (British & American 20th Century)
- History (British & European 20th Century)
- Psychology



EXTRAORDINARY EXTRAS

- BMAT/UKCAT lessons
- Debating Club
- Extended Project Qualification
- Mental Health Task Force
- Talks from GPs and Admissions tutors
- Volunteering



TYPICAL CAREER PATHWAYS

- Dentistry
- Medicine
- Veterinary Science/ Animal Care



In 2018, England had **27,495** GPs. A further **112,346** doctors worked in hospital.



The average starting salary for a newly-qualified vet is approximately **£30,000**



Dentists employed by the NHS earn in the salary range of **£38,861-£83,118**



PERFORMING ARTS PATHWAY

CHOOSE ONE OR TWO CORE SUBJECTS

Dance
(vocational)

Drama

Music



CHOICE OF ADDITIONAL SUBJECTS*:

* These subjects are recommended but other options are also available

- Biology
- Classical Civilisation
- Digital Music Production (vocational)
- English Language
- English Language and Literature
- Fine Art
- Maths
- Media Studies
- Sport (vocational)



EXTRAORDINARY EXTRAS

- Choir
- College Production
- Dance Company
- Entrepreneurship Qualification
- Extended Project Qualification
- Fashion Show
- Film Club/Competitions
- Orchestra
- Photography



TYPICAL CAREER PATHWAYS

- Acting and Performing
- Arts Administration
- Composing
- Music Therapy
- Stage Management
- Teaching
- Theatre work



Over 140,000 people are employed in the music industry, generating **£4.4 billion** for the UK economy



Starting salaries for Assistant Stage Managers are between **£18,000** and **£22,000**



64 Universities offer 108 degrees including 'Performing Arts'



SOCIAL SCIENCES PATHWAY

CHOOSE ONE OR TWO CORE SUBJECTS

Sociology

Psychology



CHOICE OF ADDITIONAL SUBJECTS*:

* These subjects are recommended but other options are also available

- Biology
- Classical Civilisation
- Economics
- English Language
- English Language and Literature
- Geography
- Government and Politics
- History (British & American 20th Century)
- History (British & European 20th Century)
- History (The Tudors & French Revolution)
- Law
- Maths
- Religious Studies
- Philosophy
- Sport (vocational)



EXTRAORDINARY EXTRAS

- Core Maths
- Debating Club
- Extended Project Qualification
- Journalism
- Student magazine
- University Taster Day



TYPICAL CAREER PATHWAYS

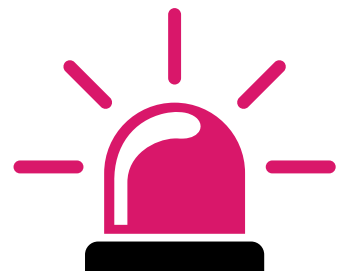
- Advice Worker
- Community Development
- Immigration, Customs & Border Roles
- International Aid
- Police Officer
- Psychologist
- Social Research
- Social Work
- Teaching

95,000

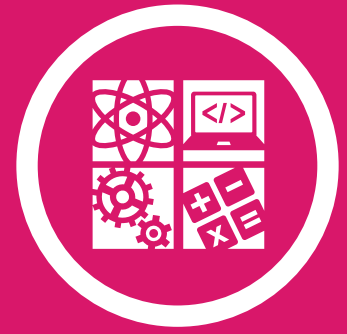
There were circa **95,000** registered social workers in the UK



Starting salaries for trainee clinical psychologists are **£26,565**, whilst consultant roles range from **£56,665** to **£83,258**



In 2018, the police force numbered just under **200,000** (full time equivalent posts)



STEM AND HEALTHCARE PATHWAY

CHOOSE AT LEAST TWO CORE SUBJECTS

Applied Science
(vocational)

Chemistry

Physics

Biology

Maths

Psychology



CHOICE OF ADDITIONAL SUBJECTS*:

* These subjects are recommended but other options are also available

- Computer Science
- Environmental Science
- Further Maths
- Geography
- Product Design
- Sociology
- Sport (vocational)



EXTRAORDINARY EXTRAS

- Biology/Physics Olympiad
- Core Maths
- Employer Visits & Lectures
- Extended Project Qualification
- Mental Health Task Force
- University Visits



TYPICAL CAREER PATHWAYS

- Agronomy
- Biochemist
- Biomedicine
- Clinical Science
- Ecologist
- Materials Science
- Microbiologist
- Midwifery
- Nursing
- Neuroscience
- Nursing
- Occupational Health
- Pharmacy
- Physiotherapy
- Radiography



The NHS employs over **1.5 million people**, with over 350 different roles available



In October 2017, there were **21,900 midwives**



There is a shortage of **4,000 physiotherapists** in the UK

A LEVEL CASE STUDIES



TINA BANSEGA

COMMONWEAL SCHOOL

Studied: A Levels in Media Studies, Communications and Culture and Creative Writing.

Where now?
Studying International Media and Communication Studies at the University of Nottingham



BENJAMIN BLANKS

DORCAN ACADEMY

Studied: A Levels in Ancient History, Classical Civilisation and History (Tudors and Stuarts)

Where now?
Studying Japanese at Oxford Brookes University



AMY NEWMAN

DORCAN ACADEMY

Studied: A Levels in Biology, Chemistry, Environmental Studies and Maths; then went on to complete an MSci (Integrated Masters Degree) in Biology at the University of Bristol

Where now?
Studying for a PhD in Microbiology at the University of Warwick.



CIARA LEWIS

ST JOSEPH'S CATHOLIC COLLEGE

Studied: A levels in British and European History, Government and Politics and Classical Civilisation

Where now?
Studying Ancient and Modern History at the University of Oxford



SANTINO PRINZI

KINGSDOWN

Studied: A Levels in English Literature, Drama and Theatre Studies and Maths; then English Literature and Creative Writing at Bath Spa University; then a Masters at the University of Bristol

Where now?
Writer and copywriter



New College is committed to Equality, Diversity, Inclusion and Excellence.



www.newcollege.ac.uk

New College Drive, Swindon, SN3 1AH. Tel: 01793 611470

